

- Other Cabinet Members consulted
- Chief Executive
- Legal Victoria Gould – “fine”
- Finance
- Other Strategic Directors
- District Councils
- Health Authority
- Police
- Other Bodies/Individuals All stakeholders
In addition a copy of the county overview
(Childcare Audit and Sufficiency Assessment
2006/07) was placed in all main libraries and on
the WCC consultation database and website

FINAL DECISION **YES**

SUGGESTED NEXT STEPS:

Details to be specified

- Further consideration by this Committee
- To Council
- To Cabinet
- To an O & S Committee
- To an Area Committee
- Further Consultation

**Stratford Joint Committee – West
17th July 2008**

Sufficiency of Childcare and Gap Analysis

**Report of the Strategic Director for Children,
Young People and Families**

Recommendation:

That the Joint Committee note the content of the Sufficiency Assessment as a requirement of the Childcare Act 2006 and consider if, in their opinion, the Gap analysis addresses the areas of need in Stratford District.

1. Background

- 1.1 The Childcare Act 2006 is the first piece of legislation solely dedicated to the provision of sufficient childcare. It seeks to implement the proposals of the Government's ten-year strategy for childcare "*Choice for Parents, the best start for Children*" (December 2004).
- 1.2 The Act places the responsibility upon Local Authorities to strategically lead the creation and development of childcare, working in partnership with the statutory, private and voluntary sectors.
- 1.3 As part of the anti-poverty strategy, childcare is identified as being a key area for consideration to allow parents the opportunity to return to work or to access training which may result in their finding work.

2. The duties imposed upon Local Authorities

- The Outcomes Duty
- The Sufficiency Duty

2.1 The Outcomes Duty

The Outcomes Duty focuses upon the improved services provided to meet the Every Child Matters Outcomes for children under five years of age. It examines improvements in their well-being and aims to reduce the inequalities in

achievements by helping them to access integrated, high quality early childhood experiences. In doing so Local Authorities are required to work within a multi-agency arena and demonstrate integrated working with partners in a range of agencies, including the private and voluntary sector.

2.2 The Sufficiency Duty

2.2.1 The Local Authority duty to assess the sufficiency of childcare came into effect in April 2007 and required all local authorities to complete a sufficiency assessment by April 2008.

2.2.2 Section 11 of the 2006 Act places a duty on the Local Authority to undertake a childcare sufficiency assessment. This assessment is deemed to be a necessary first step towards securing sufficient provision, enabling local authorities to identify gaps and establish plans and develop the childcare market to meet the needs of parents and secure sufficient childcare to enable parents to access work or training which would lead to employment opportunities.

2.2.3 Sufficient childcare, in Section 6 of the 2006 Act, is defined as “sufficient to meet the requirements of parents in the (Local Authority’s) area who require childcare in order to enable them to:

- To take up, or remain in work, or
- To undertake education or training which could reasonably be expected to assist them to obtain work.”

2.2.4 In determining whether provision of childcare is sufficient a Local Authority must have regards to the needs of parents in the provision of childcare in respect of which the childcare element of the working tax credit is payable and also have regards to whether the provision of childcare is suitable for children with disabilities.

2.2.5 Local Authorities take the strategic lead in the development of childcare services but are not expected to provide them directly.

2.2.6 Section 11 of the Act requires the Local Authority to prepare a sufficiency assessment at intervals at least every three years but also expects that it will be kept under review until the assessment is superseded by a new one.

3. Summary

The two documents submitted for consideration – the Early Years Gap Survey 2007/08 (**Appendix A**) and the Stratford District Sufficiency Assessment 2007/08 (**Appendix B**) – outline the sufficiency of childcare within Stratford District and identify the recognised gaps in provision.

4. Recommendation

That the Joint Committee note the content of the Sufficiency Assessment as a requirement of the Childcare Act 2006 and consider if, in their opinion, the Gap analysis addresses the areas of need in Stratford District.

MARION DAVIS
Strategic Director for Children,
Young People and Families

Saltisford Office Park
Ansell Way
Warwick

1st July 2008

This page has been left intentionally blank

Early Years Gap Survey 2007-2008

Published by
Family Information Service
Children, Young People and Families
May 2008

Table of Contents

	Page number
Introduction	3
County wide perspective	3
Area reports:	
North Warwickshire	6
Nuneaton and Bedworth	8
Rugby	10
Stratford	12
Warwick	14
Appendices:	
Appendix A: Results for the county and the five districts of Warwickshire 2007	17
Appendix B: Warwickshire Childcare and Early Education Providers Jan 08	18
Appendix E: Gap survey form	19

Early Years Gap survey

Introduction

The Gap survey was circulated during October 2007 to all schools with reception classes. A copy of the survey form can be found in Appendix E.

The purpose was to collect information on the use of formal pre-school by children entering reception classes this academic year. In total there were 5358 children across 176 schools.

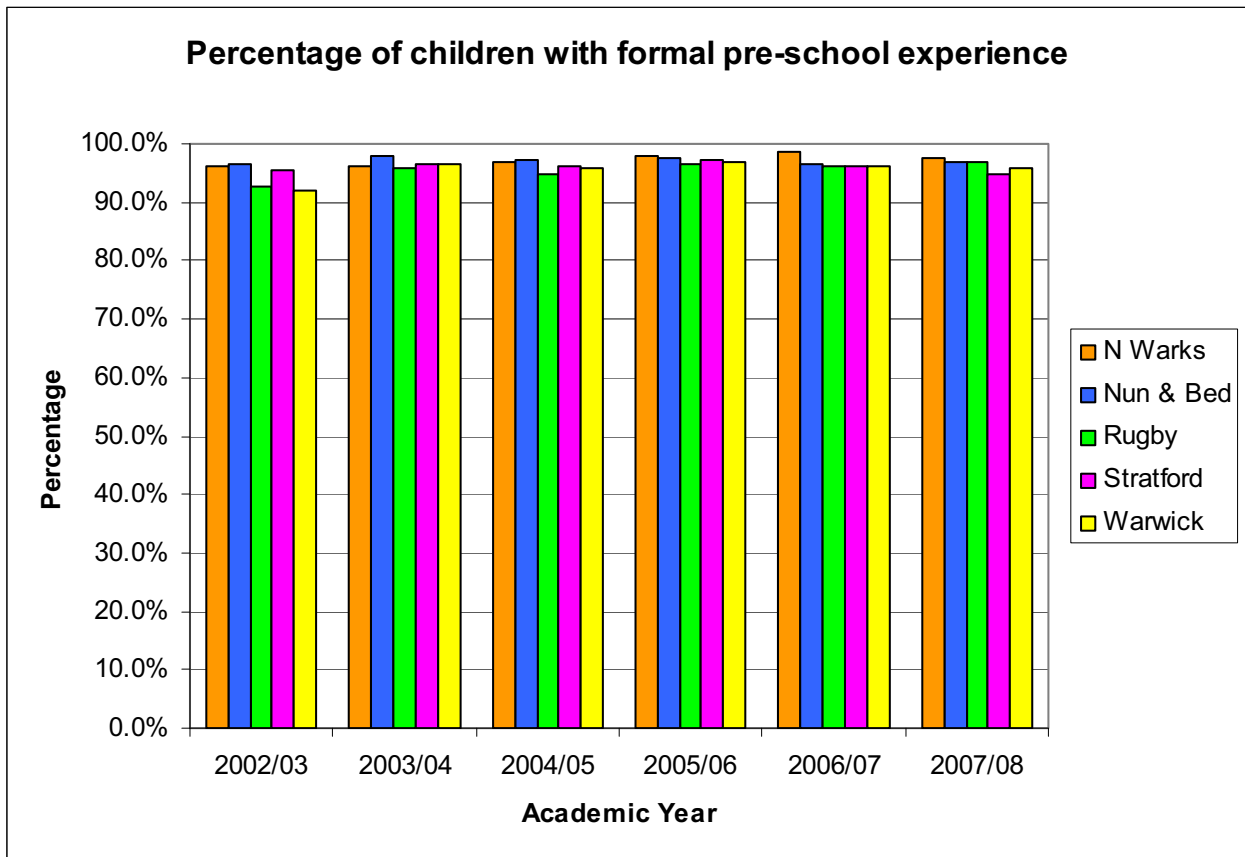
All 176 schools completed the survey, giving a return rate of 100%

When looking at the following information, please bear in mind that:

- Some children experienced more than one type of formal pre-school. Therefore the numbers of children experiencing each type of pre-school provision may be greater than the total number of children.
- In some cases, no information was available on whether a child had experienced a formal pre-school setting or not.
- A small number of children have arrived from other countries, and therefore did not have an opportunity to access pre-school settings in Warwickshire.
- The number of children is taken from the survey responses, and may differ slightly from PLASC school data. However the difference is not significant and does not affect the overall trends.

County overview

- 5160 children were known to have attended at least one kind of formal pre-school. This is 96.3% of children entering reception classes this year.
- In 105 settings (59.7% of providers) all the children had some kind of formal pre-school experience. This compares to 63.8% in 2006 and 60.5% in 2005
- 60 settings had between 1 and 4 children with no formal pre-school experience. This compares to 53 settings in 2006 and 64 in 2005.
- 11 settings had 5 or more children who had not experienced any formal pre-school, or where information was not known. Further details of these settings are listed under the relevant area report and details from these schools in previous years can be found in Appendix B.



	2002/03	2003/04	2004/05	2005/06	2006/07	2007/08
Total children	5030	5600	5578	5436	5236	5358
Number with pre-school experience	4757	5416	5370	5283	5059	5160
Percentage	94.6%	96.7%	96.3%	97.2%	96.6%	96.3%

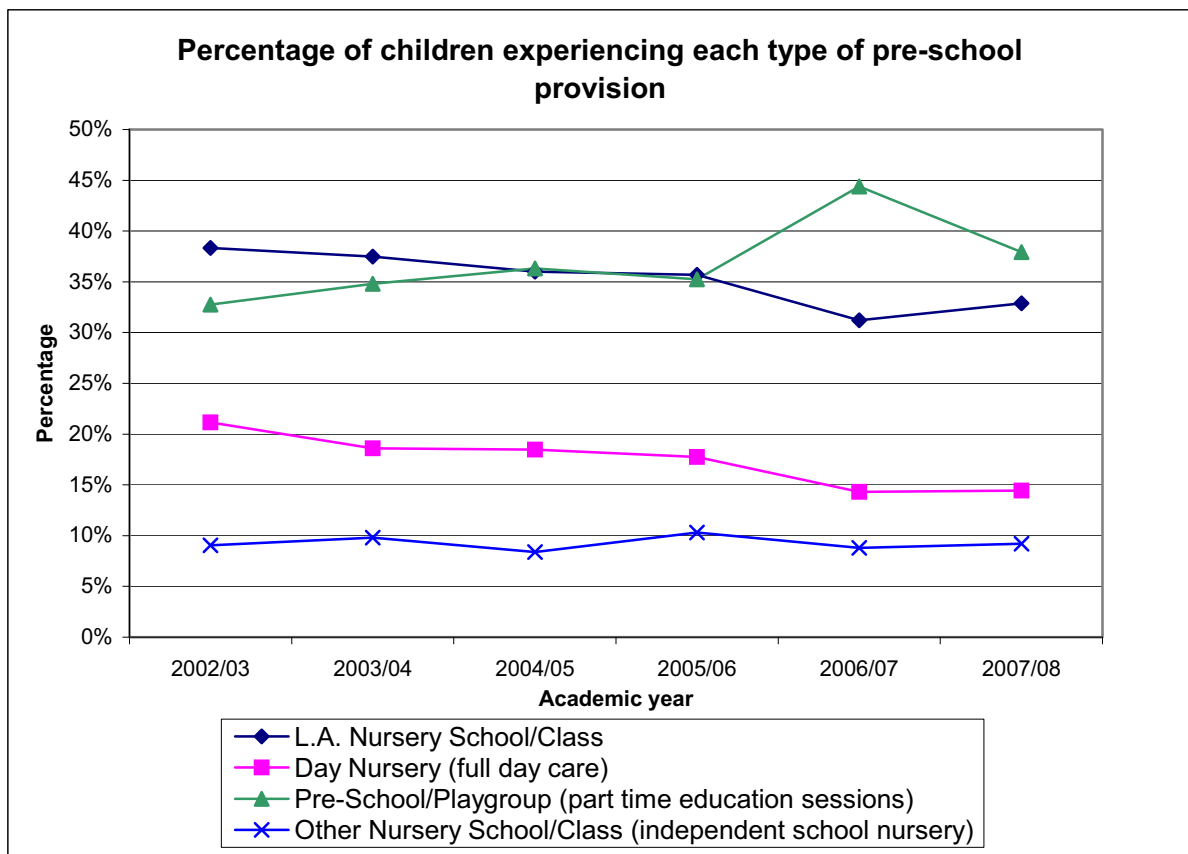
2.1% of parents actively chose not to use formal pre-school provision for the children entering reception classes this year, and 2 parents used an alternative type of childcare. A small minority are unable to access formal pre-school for their children.

In a number of cases schools were not aware of the reasons why specific children had not accessed formal pre-school settings. Therefore full analysis of the reasons why formal pre-school provision was not used is not viable.

Overall North Warwickshire has the highest level of pre-school use with 97.5% of children in this area accessing such settings. This compares to the other areas that range from 94.7% in Stratford, to 97.0% in Nuneaton and Bedworth.

The type of pre-school accessed also varied from area to area, with local authority nursery provision and part time places in pre-schools/playgroups the most common overall.

The percentage accessing each type of provision follows a similar trend to the actual numbers throughout, and therefore percentages have been used in preference to actual figures to enable easier comparison between areas.



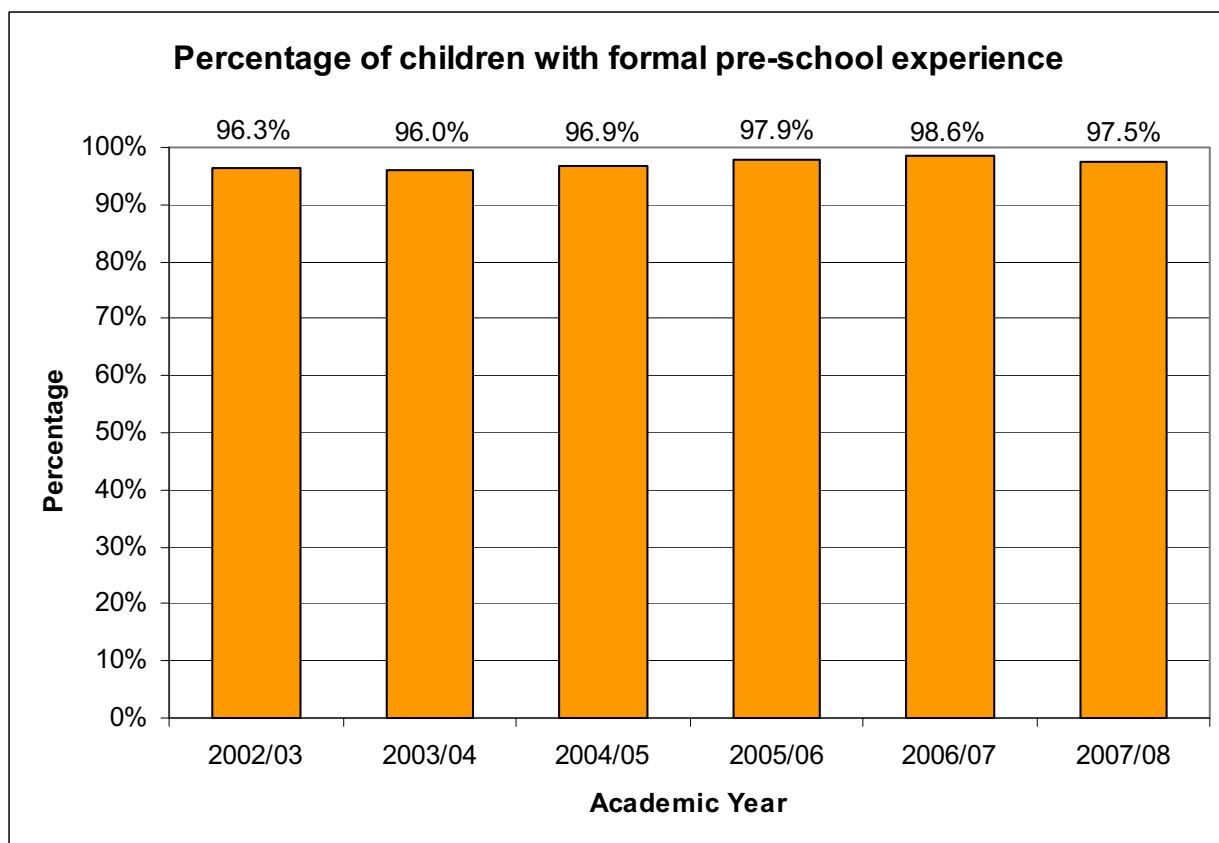
The type of pre-school experienced by children is broadly similar to the previous year. Use of day nurseries (full day care) and other nursery school/classes (independent school nursery) has remained stable; Local authority maintained nurseries has shown a small increase, and there has been a decrease in the use of pre-school/playgroup sessions. However this decrease is in line with responses in 2005/06 and suggests that in fact the responses in 2006/07 were unusual and this year has seen a return to previous levels.

The county overview gives a good indication of general trends, however there are some significant differences between the different areas. These are explored further in the area reports, and are detailed in Appendix A.

For further information relating to this document please contact Elaine Coates, Information Analyst on 01926 742209 or elainecoates@warwickshire.gov.uk.

North Warwickshire

- 24 schools in this area have reception classes, with a total of 643 children enrolling this academic year
- 97.5% (627 children) had formal pre-school experience
- 12 children are known to have accessed more than one kind of pre-school setting

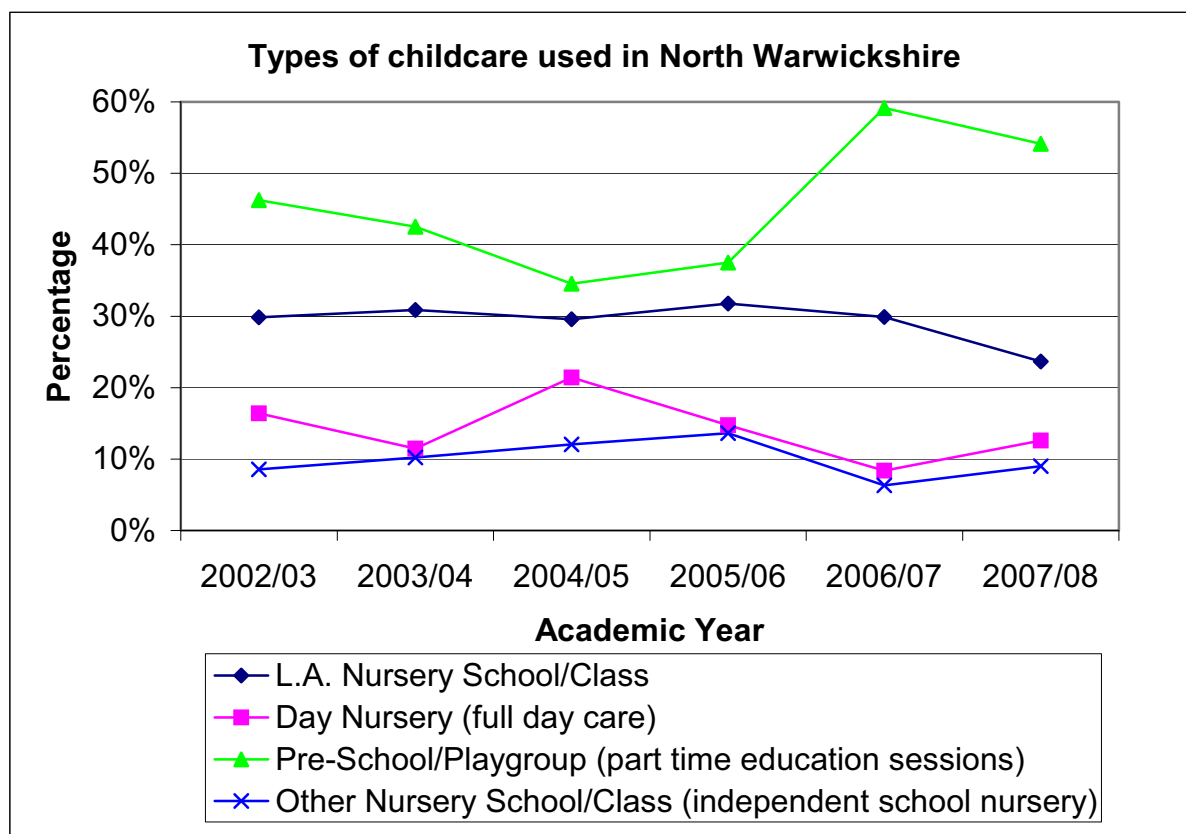


	2002/03	2003/04	2004/05	2005/06	2006/07	2007/08
Total children	678	725	684	659	628	643
Number with pre-school experience	653	696	663	645	619	627
Percentage	96.3%	96.0%	96.9%	97.9%	98.6%	97.5%

- 1.7% of parents (affecting 11 children) actively chose not to use the provision available, or used an alternative form of childcare. This amounts to 73.3% of the children who had not accessed formal pre-school facilities
- No school in this area had 5 or more children without pre-school experience

This area has the greatest percentage of children who are known to have made use of formal pre-school settings, and there were no reported cases of a lack of provision or of cost restricting use.

This is very similar to previous years, and shows provision in this area is meeting the needs of parents very well.



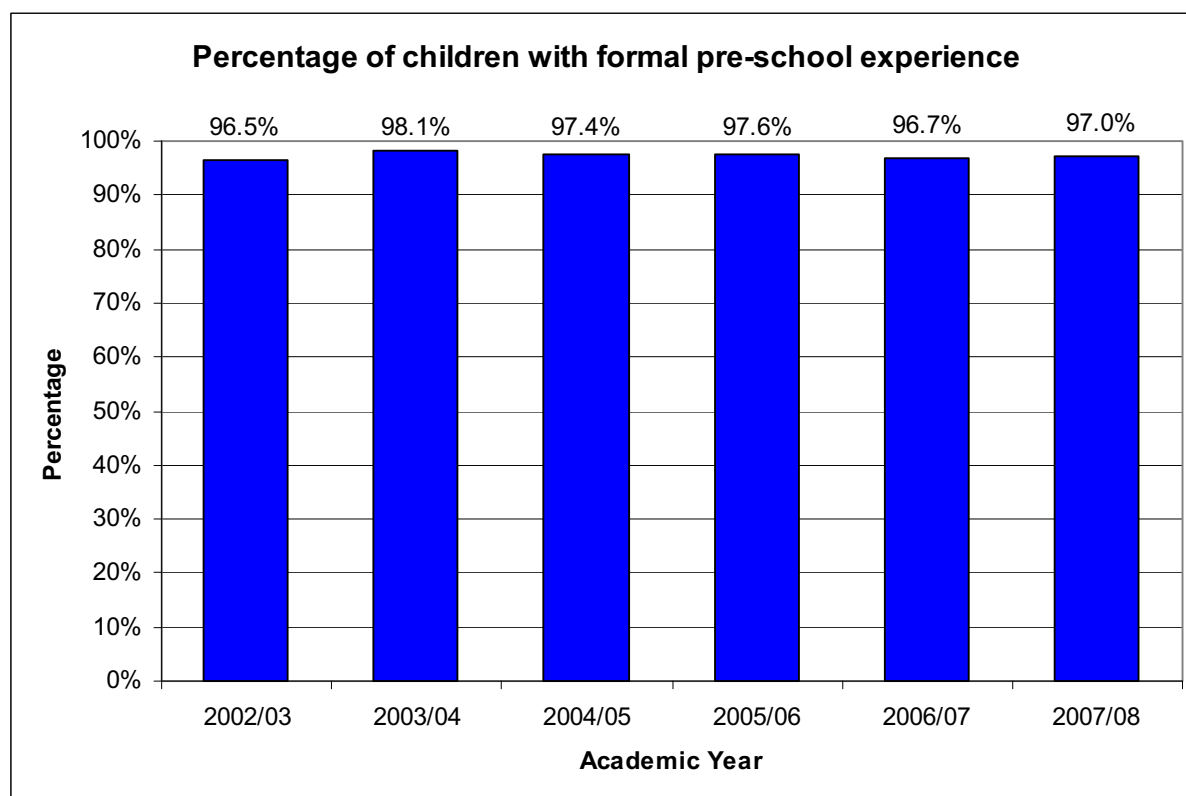
	2002/03	2003/04	2004/05	2005/06	2006/07	2007/08
L.A. Nursery School/Class	29.9%	30.9%	29.6%	31.8%	29.9%	23.6%
Day Nursery (full day care)	16.4%	11.5%	21.4%	14.7%	8.4%	12.6%
Pre-School/Playgroup (part time education sessions)	46.3%	42.5%	34.5%	37.5%	59.1%	54.1%
Other Nursery School/Class (independent school nursery)	8.6%	10.2%	12.1%	13.6%	6.3%	9.0%

Note: These figures will not add to 100% as children may have accessed more than one kind of provision, or the type of provision used may not be known

Use of pre-school/playgroup provision remains highest in this district, with over half of all children having experience of this type of care.

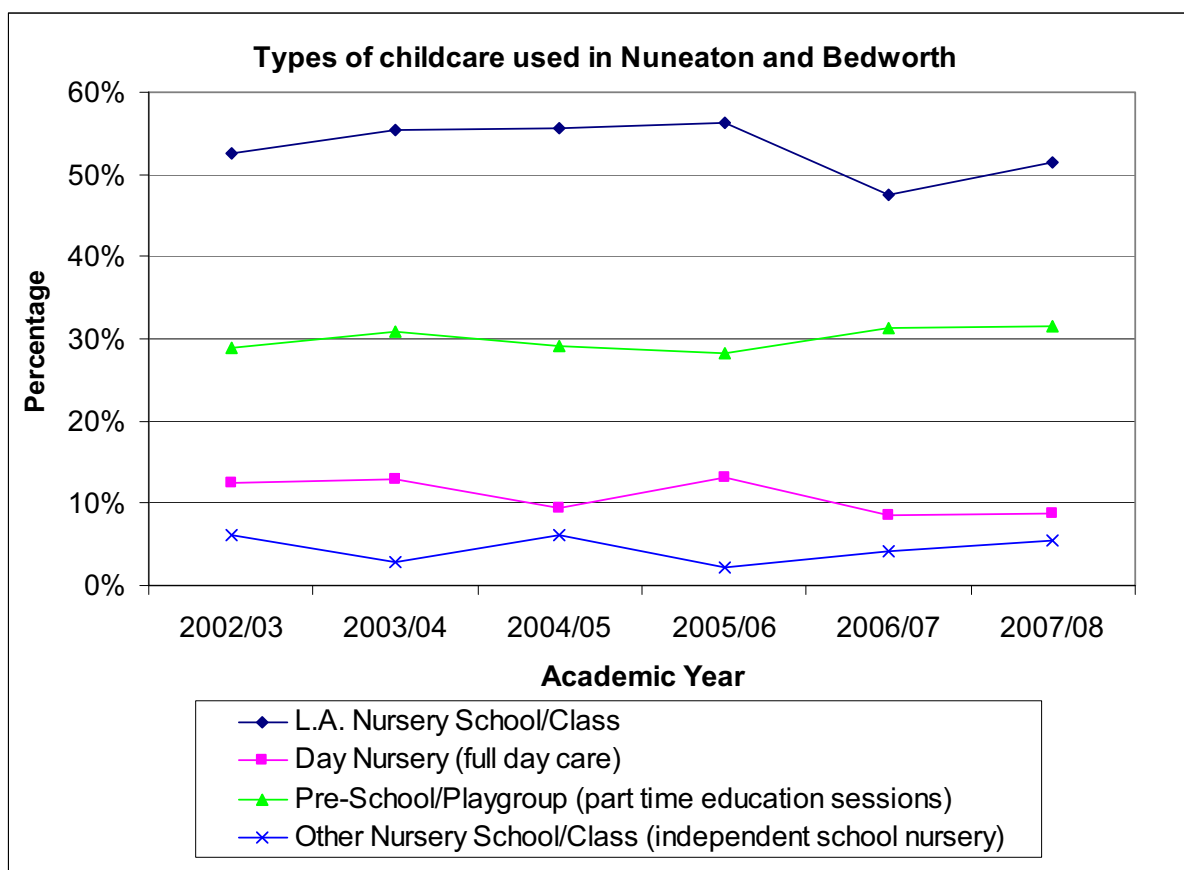
Nuneaton and Bedworth

- 29 schools in this area have reception classes, with a total of 1336 children enrolling this academic year
- 97.0%% (1296 children) had formal pre-school experience
- 11 children are known to have accessed more than one kind of pre-school setting



	2002/03	2003/04	2004/05	2005/06	2006/07	2007/08
Total children	1285	1403	1374	1411	1284	1336
Number with pre-school experience	1240	1376	1338	1377	1241	1296
Percentage	96.5%	98.1%	97.4%	97.6%	96.7%	97.0%

- 1.3% of parents (affecting 18 children) actively chose not to use the provision available, or used an alternative form of childcare. This amounts to 54.5% of the children who had not accessed formal pre-school facilities
- 1 school reported more than 5 pupils with no known pre-school experience
- 4 children did not attend pre-school due to a lack of provision nearby and 1 due to the cost



Among the children who were known to have formal pre-school experience, the type of provision used was not specified for 3 children.

	2002/03	2003/04	2004/05	2005/06	2006/07	2007/08
L.A. Nursery School/Class	52.5%	55.4%	55.7%	56.2%	47.5%	51.4%
Day Nursery (full day care)	12.4%	13.0%	9.4%	13.1%	8.6%	8.8%
Pre-School/Playgroup (part time education sessions)	29.0%	30.8%	29.2%	28.2%	31.4%	31.5%
Other Nursery School/Class (independent school nursery)	6.1%	2.8%	6.1%	2.2%	4.1%	5.5%

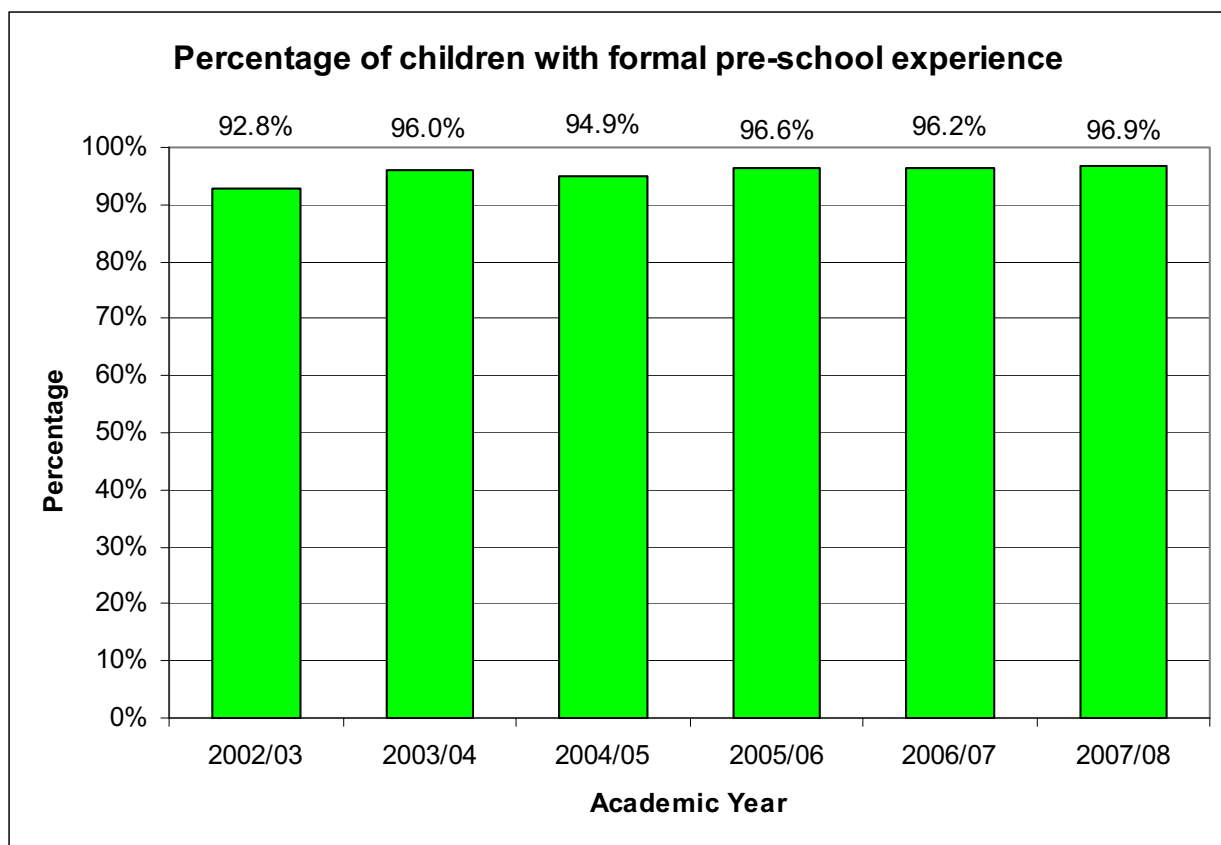
Note: These figures will not add to 100% as children may have accessed more than one kind of provision, or the type of provision used may not be known

Use of local authority nursery schools was highest in this area, with 51.4% of children with pre-school experience having accessed this provision. Unsurprisingly this balances with lower use of all other types of provision.

Overall use of all types of provision in this area is quite stable, with very similar percentages of children accessing each type of care compared to the previous year.

Rugby

- 31 schools in this area have reception classes, with a total of 1008 children enrolling this academic year
- 96.9% (977 children) had formal pre-school experience
- 9 children are known to have accessed more than one kind of pre-school setting

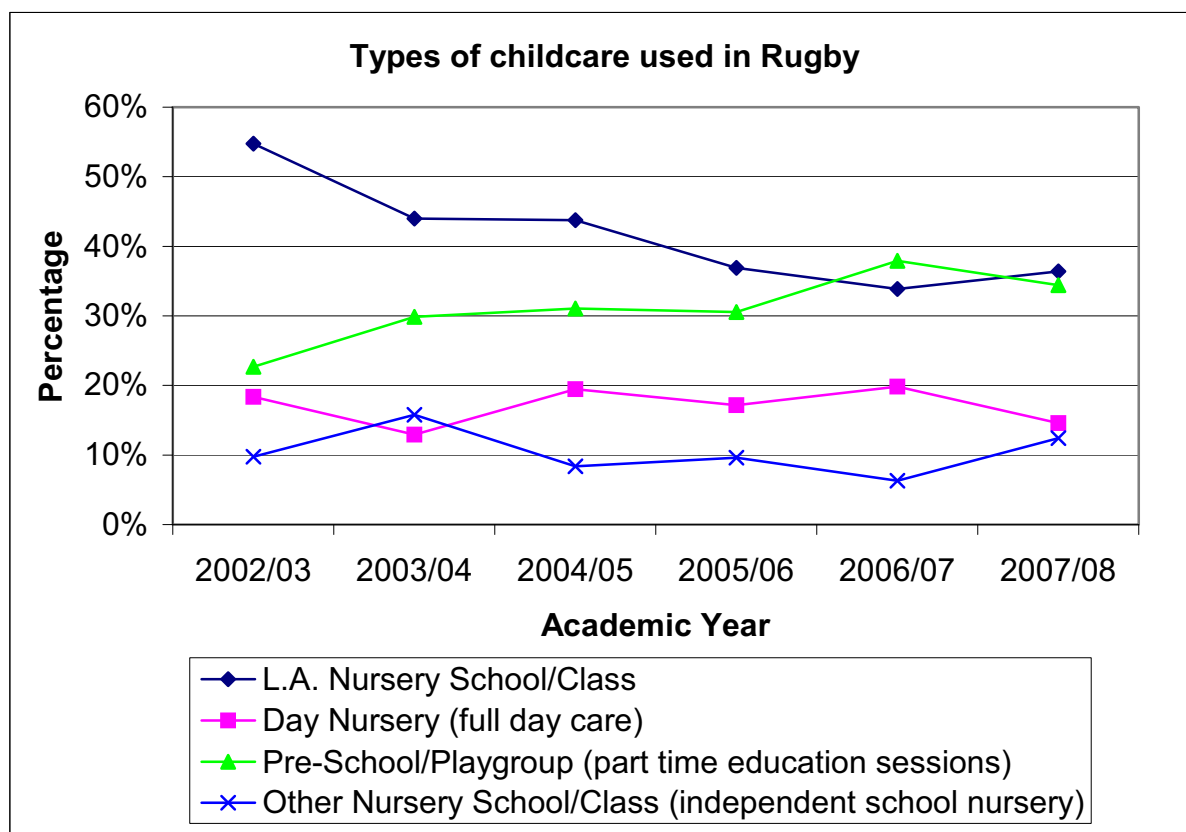


	2002/03	2003/04	2004/05	2005/06	2006/07	2007/08
Total children	893	1064	1045	1044	954	1008
Number with pre-school experience	829	1021	992	1008	918	977
Percentage	92.8%	96.0%	94.9%	96.6%	96.2%	96.9%

This is the only district where use of pre-school provision has increased slightly from the previous year, and is now at the highest level since 2002 when this information was first collected.

- 1.9% of parents (affecting 19 children) actively chose not to use the provision available, or used an alternative form of childcare. This amounts to 61.3% of the children who had not accessed formal pre-school facilities
- 3 schools reported more than 5 pupils with no known pre-school experience

There were no reported cases of a lack of provision or of cost restricting use in this area.



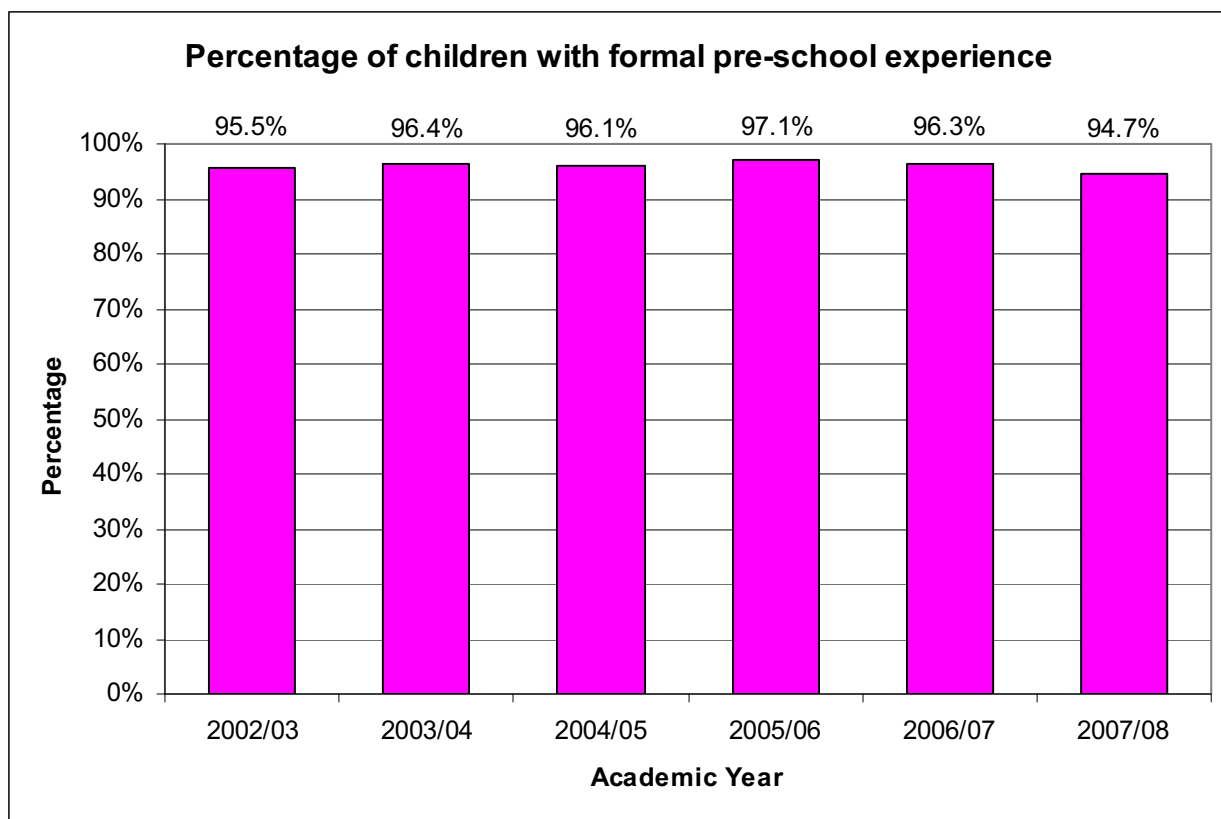
	2002/03	2003/04	2004/05	2005/06	2006/07	2007/08
L.A. Nursery School/Class	54.8%	44.0%	43.8%	36.9%	33.9%	36.4%
Day Nursery (full day care)	18.3%	12.9%	19.5%	17.2%	19.8%	14.6%
Pre-School/Playgroup (part time education sessions)	22.7%	29.9%	31.1%	30.6%	37.9%	34.4%
Other Nursery School/Class (independent school nursery)	9.8%	15.8%	8.4%	9.6%	6.3%	12.4%

Note: These figures will not add to 100% as children may have accessed more than one kind of provision, or the type of provision used may not be known

Use of independent nursery schools was highest in this district, with around 1 in 8 children having experience of this kind of childcare. This is a marked rise on the previous year.

Stratford

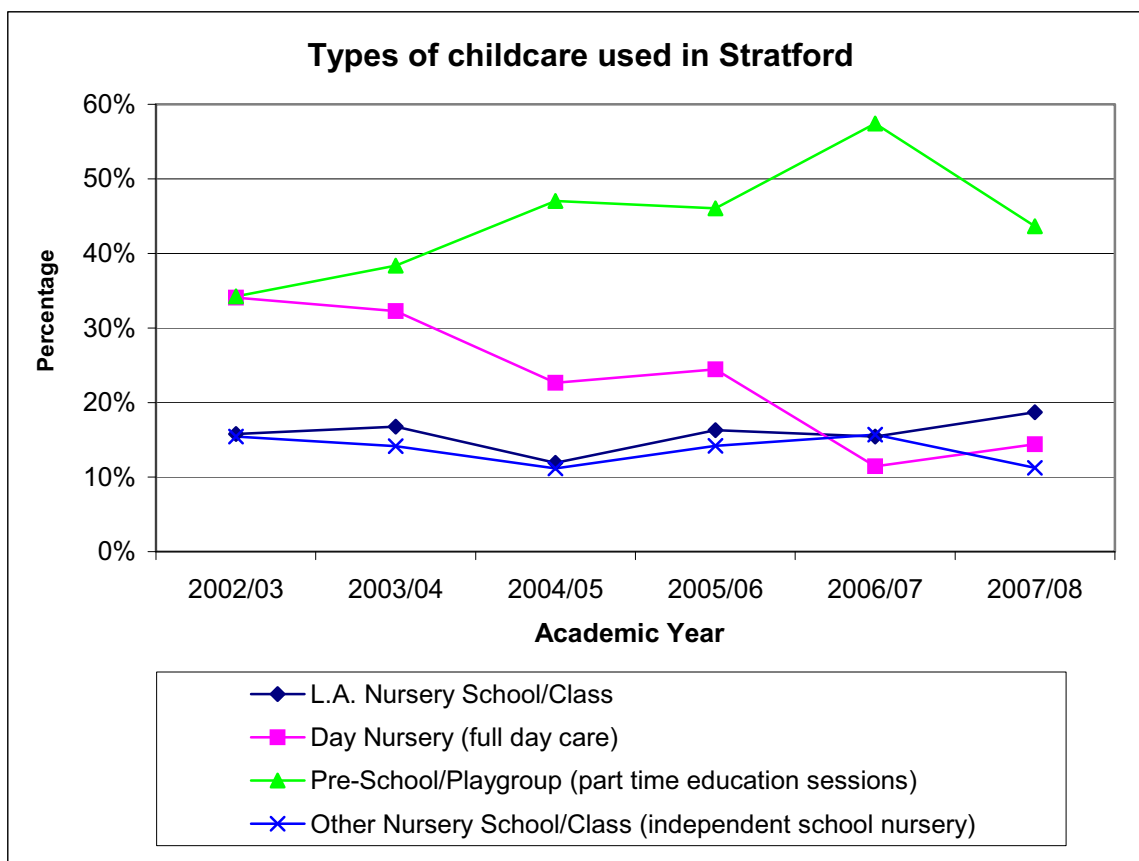
- 54 schools in this area have reception classes, with a total of 1166 children enrolling this academic year
- 94.7% (1104 children) had formal pre-school experience
- 28 children are known to have accessed more than one kind of pre-school setting



	2002/03	2003/04	2004/05	2005/06	2006/07	2007/08
Total children	1008	1180	1239	1188	1170	1166
Number with pre-school experience	963	1137	1191	1153	1127	1104
Percentage	95.5%	96.4%	96.1%	97.1%	96.3%	94.7%

The proportion of children with pre-school experience in this district is at the lowest level since 2002 when this information was first collected.

- 2.0% of parents (affecting 23 children) actively chose not to use the provision available, or used an alternative form of childcare. This amounts to 41.1% of the children who had not accessed formal pre-school facilities
- 6 schools reported more than 5 pupils with no known pre-school experience



Among the children who were known to have formal pre-school experience, the type of provision used was not specified for 96 children, attending 3 schools. This amounts to 8.7% of children with pre-school experience and therefore could affect the proportion of children accessing each type of provision.

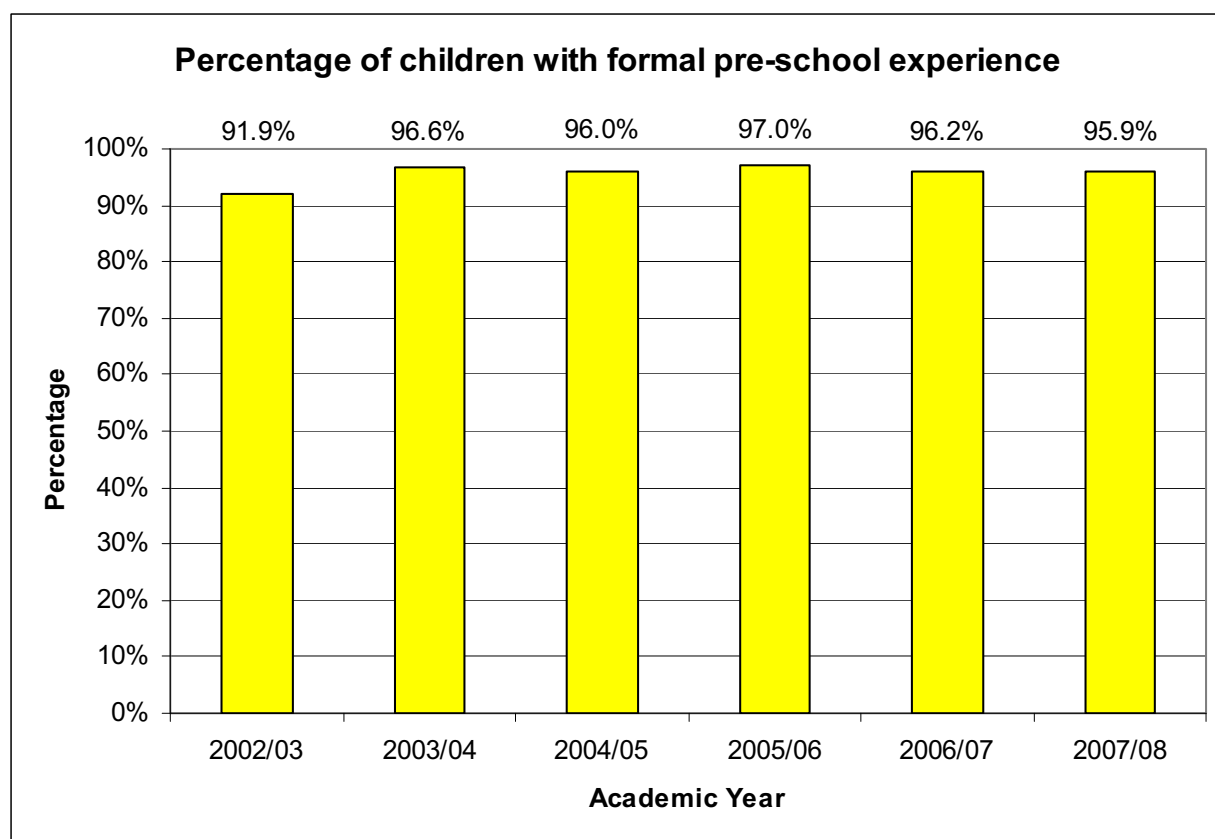
	2002/03	2003/04	2004/05	2005/06	2006/07	2007/08
L.A. Nursery School/Class	15.8%	16.8%	11.9%	16.3%	15.4%	18.7%
Day Nursery (full day care)	34.1%	32.3%	22.7%	24.5%	11.5%	14.4%
Pre-School/Playgroup (part time education sessions)	34.3%	38.4%	47.0%	46.1%	57.4%	43.7%
Other Nursery School/Class (independent school nursery)	15.5%	14.2%	11.2%	14.2%	15.7%	11.2%

Note: These figures will not add to 100% as children may have accessed more than one kind of provision, or the type of provision used may not be known

There is limited availability of maintained local authority nursery classes, and no dedicated nursery schools in this district. Therefore use of local authority provision is lower in the Stratford area.

Warwick

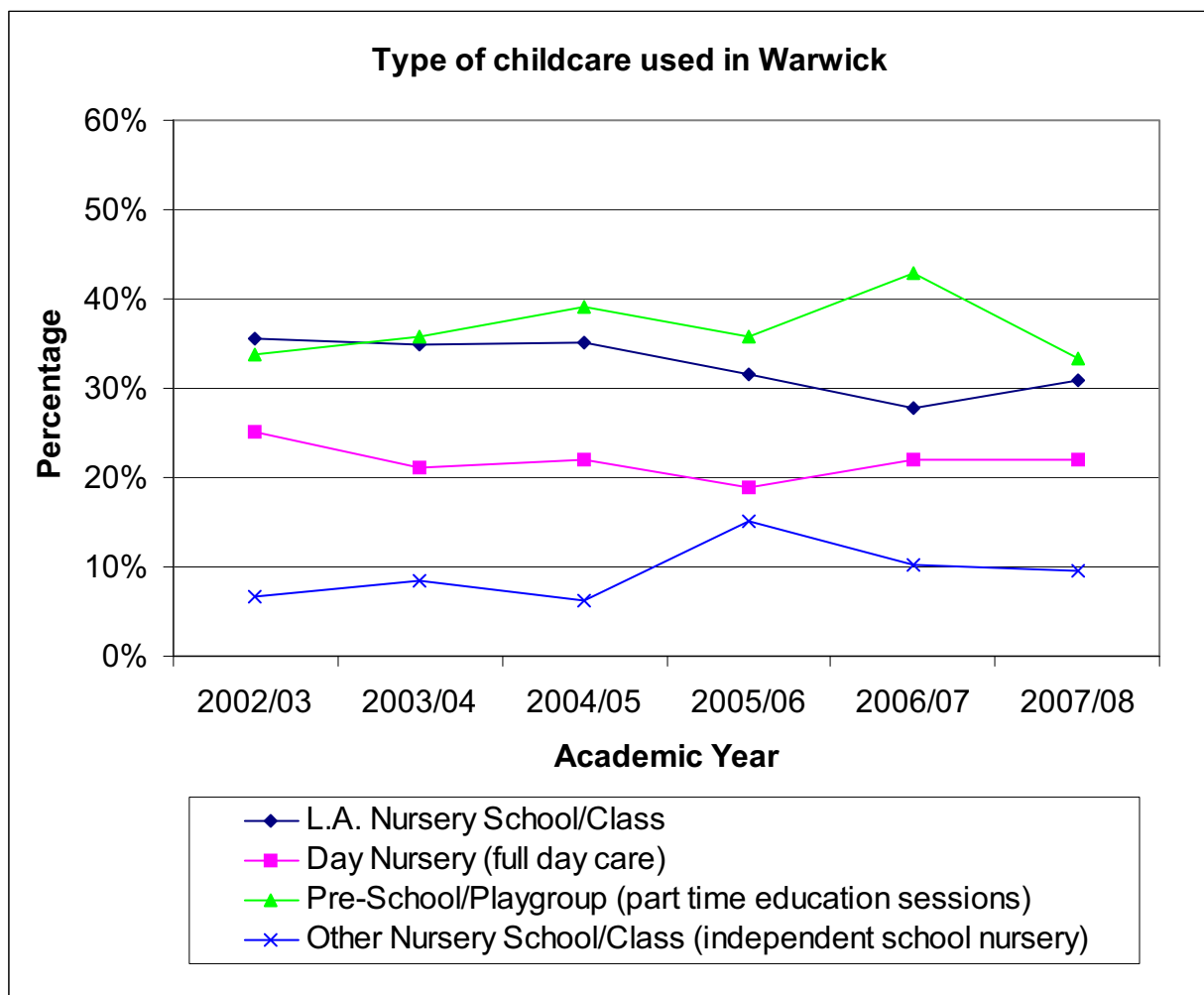
- 38 schools in this area have reception classes, with a total of 1205 children enrolling this academic year
- 95.9% (1156 children) had formal pre-school experience
- 10 children are known to have accessed more than one kind of pre-school setting



	2002/03	2003/04	2004/05	2005/06	2006/07	2007/08
Total children	1166	1228	1236	1134	1200	1205
Number with pre-school experience	1072	1186	1186	1100	1154	1156
Percentage	91.9%	96.6%	96.0%	97.0%	96.2%	95.9%

- 2.4% of parents (affecting 29 children) actively chose not to use the provision available, or used an alternative form of childcare. This amounts to 61.7% of the children who had not accessed formal pre-school facilities
- 1 school reported more than 5 children with no formal pre-school experience

There were no reported cases of a lack of provision or of cost restricting use in this area.



Among the children who were known to have formal pre-school experience, the type of provision used was not specified for 11 children, attending 3 schools. This amounts to less than 1% of children with pre-school experience and therefore is unlikely to affect the proportion of children accessing each type of provision.

	2002/03	2003/04	2004/05	2005/06	2006/07	2007/08
L.A. Nursery School/Class	35.5%	34.8%	35.1%	31.6%	27.7%	31.0%
Day Nursery (full day care)	25.2%	21.1%	22.0%	18.8%	21.9%	21.9%
Pre-School/Playgroup (part time education sessions)	33.9%	35.8%	39.0%	35.8%	42.9%	33.4%
Other Nursery School/Class (independent school nursery)	6.7%	8.4%	6.2%	15.1%	10.3%	9.6%

Note: These figures will not add to 100% as children may have accessed more than one kind of provision, or the type of provision used may not be known

Use of full day care remains highest in this area, with around 22% of children with pre-school experience having used full day care at some point.

Appendix A: Results for the county and the five districts of Warwickshire 2007

	All Districts	North Warwickshire	Nuneaton and Bedworth	Rugby	Stratford	Warwick
Total number of replies from schools with reception classes	100% (176)	100% (24)	100% (29)	100% (31)	100% (54)	100% (38)
Number of children entering reception	5358	643	1336	1008	1166	1205
Children who have received formal pre-school experience	96.3% 5160	97.5% 627	97.0% 1296	96.9% 977	94.7% 1104	95.9% 1156
Children experiencing each type of provision*						
LEA Nursery School/Class	33.52% (1796)	23.64% (152)	51.35% (686)	36.41% (367)	18.70% (218)	30.95% (373)
Day Nursery (full day care)	14.52% (778)	10.42% (67)	8.83% (118)	14.58% (147)	14.41% (168)	21.91% (264)
Pre-School/Playgroup (part time education sessions)	37.83% (2027)	53.50% (344)	31.51% (421)	34.42% (347)	43.65% (509)	33.36% (402)
Other Nursery School/Class (independent school nursery)	9.39% (503)	9.02% (58)	5.46% (73)	12.40% (125)	11.23% (131)	9.63% (116)
Children who have received no formal pre-school experience	3.5% (185)	2.3% (15)	2.7% (36)	3.1% (31)	4.8% (56)	3.9% (47)
Reasons why children did not experience any formal pre-school**						
Parental choice	53.0% (98)	73.3% (11)	50.0% (18)	61.3% (19)	39.3% (22)	59.6% (28)
No provision nearby	3.8% (7)	0.0% (0)	11.1% (4)	0.0% (0)	5.4% (3)	0.0% (0)
Cost prohibitive	2.7% (5)	0.0% (0)	2.8% (1)	0.0% (0)	7.1% (4)	0.0% (0)
Used another form of childcare	1.1% (2)	0.0% (0)	0.0% (0)	0.0% (0)	1.8% (1)	2.1% (1)
Other reasons	21.6% (40)	20.0% (3)	27.8% (10)	9.7% (3)	25.0% (14)	21.3% (10)

* Some children attended more than one kind of provision. Figure given is a percentage of those who have received formal pre-school experience

** Not all reasons for not experiencing formal pre-school are known, therefore these figures will not add up to 100%

Actual numbers are shown in brackets

Appendix B: Warwickshire Childcare and Early Education Providers Jan 08

Registered Childcare Providers by Ofsted Daycare type

	North Warwickshire	Nuneaton and Bedworth	Rugby	Stratford	Warwick	Total
Childminders	104	205	142	159	161	771
Creche	3	5	3	3	5	19
Full Daycare	22	27	32	56	50	187
Sessional Daycare	9	16	22	19	20	86
OOS - OOS	17	25	28	33	33	136
OOS - Holiday		29	16	20	21	86
Totals	163	307	243	290	290	1293

Local Authority Nursery Provision

	North Warwickshire	Nuneaton and Bedworth	Rugby	Stratford	Warwick	Total
L.A. Maintained Nursery	7	16	13	7	10	53
L.A. Maintained Nursery (SEN)	1	2	1	1	1	6
Totals	8	18	14	8	11	59


Warwickshire Children, Young People and Families Directorate
'GAP' Survey Autumn 2007

Survey purpose:

- To identify the number of children entering Reception classes with no pre-school experience
- To identify why these children did not have any pre-school experience

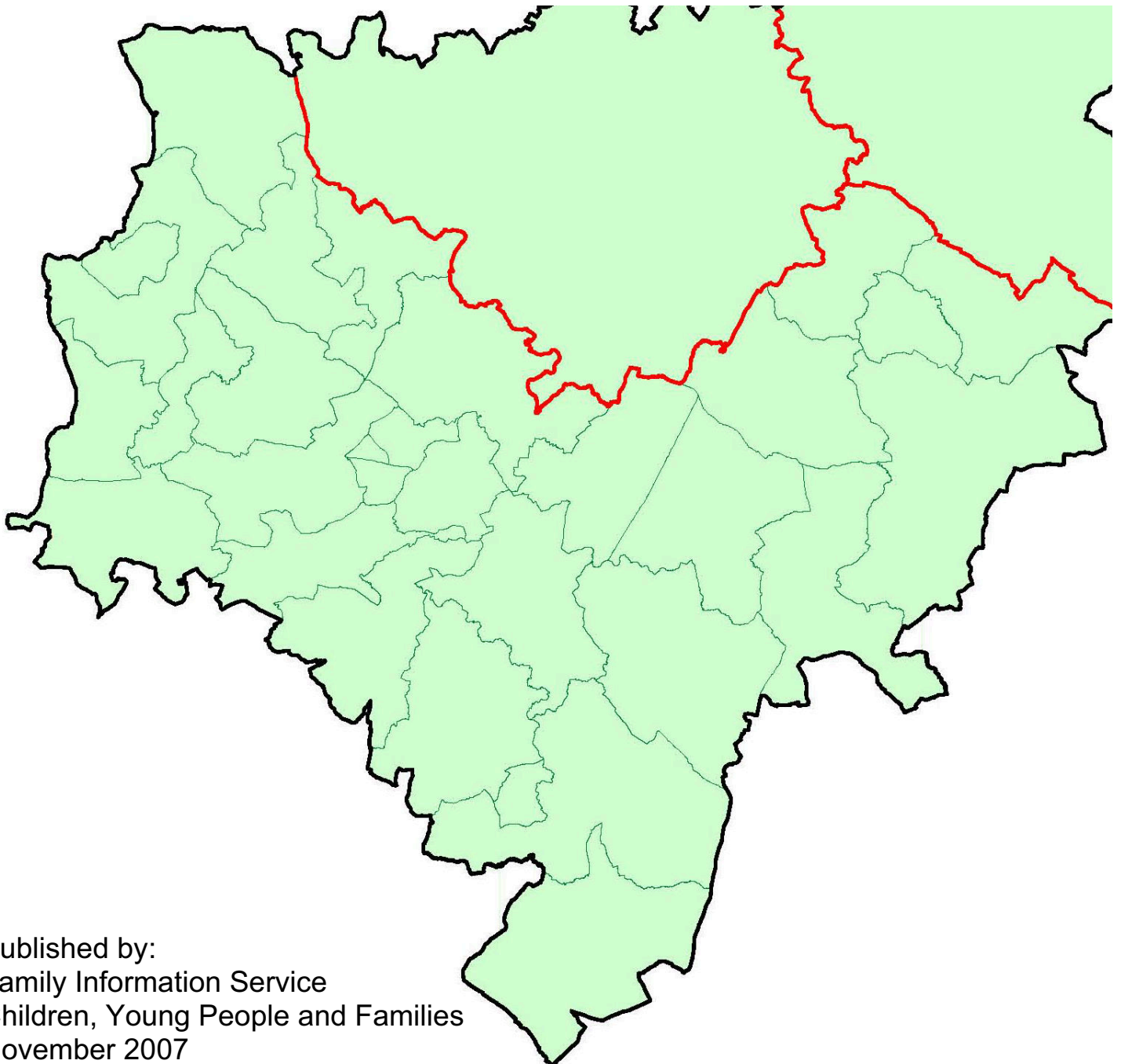
Please complete the survey and return it in the enclosed pre-paid envelope to FREEPOST RRCB-HYCJ-JAZG Warwickshire Family Information Service, Saltisford Office Park, Ansell Way, Warwick, CV34 4UL. If you have any questions regarding the completion of the survey please contact Elaine Coates, Information Analyst on 01926 742209.

<p>Q1 Name of the person completing the survey (PLEASE USE BLOCK CAPITALS)</p> <input style="width: 90%; height: 25px;" type="text"/>	<p>Q3 School Postcode</p> <input style="width: 90%; height: 25px;" type="text"/>
<p>Q2 School Name</p> <input style="width: 90%; height: 25px;" type="text"/>	<p>Q4 Unique DfES Reference Number</p> <p>937/ <input style="width: 100px; height: 20px;" type="text"/></p>

<p>Q5 How many children entered Reception in your school this year?</p> <p style="text-align: center;"><input style="width: 60px; height: 25px;" type="text"/></p> <p>Q6 How many of these children had received formal pre-school experiences? (E.g. Playgroup, pre-school, day nursery, other nursery school/class).</p> <p style="text-align: center;"><input style="width: 60px; height: 25px;" type="text"/></p> <p>Q7 How many children entering Reception had no formal pre-school experience?</p> <p style="text-align: center;"><input style="width: 60px; height: 25px;" type="text"/></p> <p>Q8 Of those children who did experience formal pre-school please indicate the number of children against the following provision choices. If more than one applies please enter into each category.</p> <p>a) LEA Nursery School/Class <input style="width: 40px; height: 25px;" type="text"/></p> <p>b) Day Nursery (full day care) <input style="width: 40px; height: 25px;" type="text"/></p> <p>c) Pre-School/Playgroup (part time education sessions) <input style="width: 40px; height: 25px;" type="text"/></p> <p>d) Other Nursery School/Class (independent school nursery) <input style="width: 40px; height: 25px;" type="text"/></p>	<p>Q9 Of those children who did not experience any formal pre-school experience, please enter the number of children each reason is relevant to.</p> <p>A. Parental Choice <input style="width: 40px; height: 25px;" type="text"/></p> <p>B. No provision nearby <input style="width: 40px; height: 25px;" type="text"/></p> <p>C. Cost prohibitive <input style="width: 40px; height: 25px;" type="text"/></p> <p>D. Used another form of childcare e.g. childminder, relative or friend <input style="width: 40px; height: 25px;" type="text"/></p> <p>E. Other reasons (please state) <input style="width: 40px; height: 25px;" type="text"/></p> <p>_____</p> <p>_____</p> <p>_____</p> <p>_____</p> <p>_____</p> <p style="text-align: center;">Thank you for completing this survey</p> <div style="text-align: center;">  <p>Warwickshire County Council</p> </div>
--	---

If you find this document difficult to understand, we can provide it in another format, for example in Braille, in large print, on audiotape, in another language or by talking to you. Please contact us on 0845 0908044.

Stratford District Sufficiency Assessment 2007/08

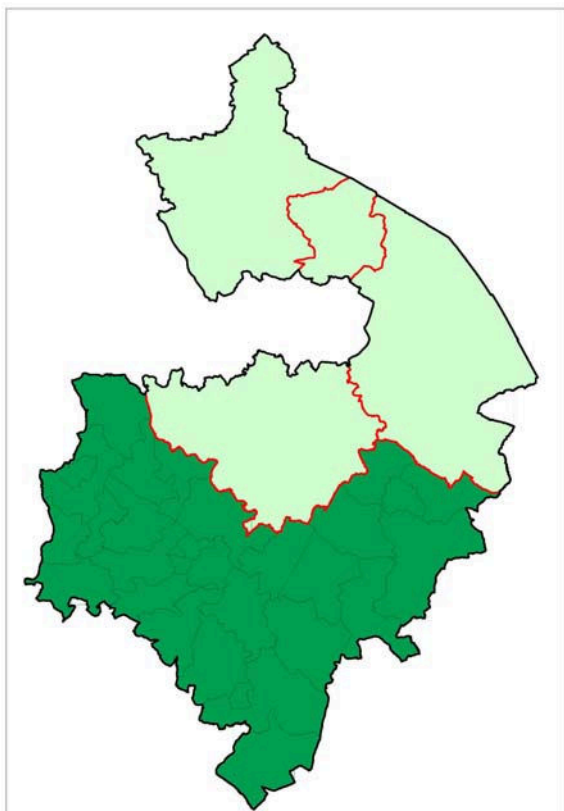


Published by:
Family Information Service
Children, Young People and Families
November 2007

Table of contents

	Page Number
Introduction	3
Availability of childcare	5
Demand for childcare	9
Affordability of childcare	13
Ward profiles	16
Alcester	17
Aston Cantlow	18
Bardon	19
Bidford and Salford	20
Brailes	21
Burton Dassett	22
Claverdon	23
Ettington	24
Fenny Compton	25
Harbury	26
Henley	27
Kineton	28
Kinwarton	29
Long Compton	30
Long Itchington	31
Quinton	32
Sambourne	33
Shipston	34
Snitterfield	35
Southam	36
Stockton and Napton	37
Stratford Alveston	38
Stratford Avenue and New Town	39
Stratford Guild and Hathaway	40
Stratford Mount Pleasant	41
Studley	42
Tanworth	43
Tredington	44
Vale of the Red Horse	45
Welford	46
Wellesbourne	46
Appendices	47
Appendix A: Maps showing distribution of children by age group	48
Appendix B: Map showing location of childcare by type	49
Appendix C: Parent's survey responses on access to childcare	50
Appendix D: Average cost of childcare in Stratford district	51
Appendix E: Breakdown of children with a statement of special educational needs by type of need	52
Appendix F: Glossary of abbreviations	52

Stratford District Sufficiency Assessment



Introduction

Stratford District covers an area of 377 square miles, and is made up of 31 wards. It is the largest geographical district, covering almost half of the county.

It has a population of 119,000 (mid 2005 estimate) and has the lowest population density in Warwickshire.

Stratford district is predominantly rural in nature, with low levels of deprivation.

Children in Stratford District

3545 children aged 0-2
2455 children aged 3-4
3876 children aged 5-7
4199 children aged 8-10
5776 children aged 11-14
4385 children aged 15-17

Total 24,236 under 18
(Warks PCT, July 07)

Maps showing the distribution of children by age group across the district are shown in Appendix A.

In 2005 approximately 3745¹ children were known to be living in lone parent families, accounting for around 25% of all children.

399 school age children have statements of special educational needs (SEN). 75% of these are male (ASRS, June 07). Children with a statement of special educational needs account for 2.2% of the school age population. A breakdown by type of need can be found in Appendix E.

67 children are currently 'looked after' by the local authority.

¹ Figure rounded to the nearest 5 at super output

Parents in Stratford District

The best measure of the number of families in the district is by claims for child benefit. In Aug 2005 13,320 families were claiming child benefit. 8415 of these families are claiming child tax credit on behalf of 14,925 children. This gives an average ratio of 1.8 children per family.

Across the district there are currently 31 teenage mothers (Connexions, Mar 07). No single ward has a large number of teenage parents. Teenage parents are more likely than others to find difficulties in accessing information to help with their parenting role.

There were 1196 benefit claimants¹ with dependent children in April 06. This affects around 930 children aged 0-4 and 1571 children aged 5-17 (Job Centre Plus, April 06).

216 parents and carers had responded to the parents survey² by June 07. A breakdown of their responses regarding their use and access to childcare can be found in Appendix C.

Further Information

If you have any comments about this report, or questions about the information within it, please contact:

Elaine Coates
Family Information Service
Saltisford Office Park
Ansell Way
Warwick
CV34 4UL
Tel: 01926 742209
Email: elainecoates@warwickshire.gov.uk

¹ Benefit claimants include those claiming job seekers allowance, income support, incapacity benefit and severe disablement allowance.

² The Family Information Service Parents Survey launched in Jan 07 to collect parents' views on access to childcare and other family support services. For further information please contact the Family Information Service.

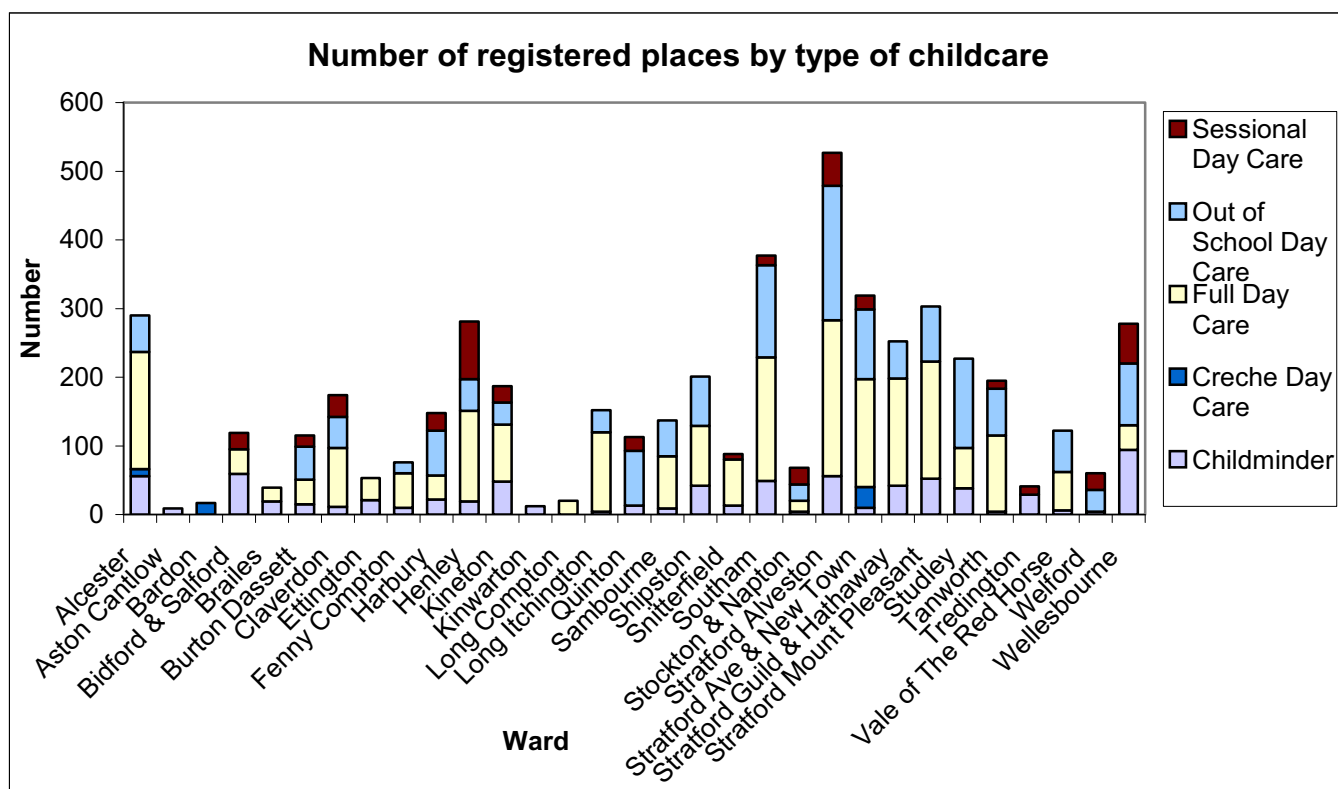
Availability of childcare

Altogether there are 294 registered childcare providers in the Stratford District. 164 of these are childminders, 56 offer full day care, 52 out of school care, 19 sessional care and 3 are crèches.

71 providers are registered to provide nursery education grant (NEG) sessions. All wards except for Aston Cantlow, Bardon and Kinwarton have at least one provider of NEG sessions.

The level of provision varies considerably between each ward in terms of the number of providers and places available.

The graph below shows the number of places and type of care on offer on a ward-by-ward basis.



Stratford Alveston has the highest level of provision overall. Stratford Avenue and New Town is the only ward to have all five types of childcare available.

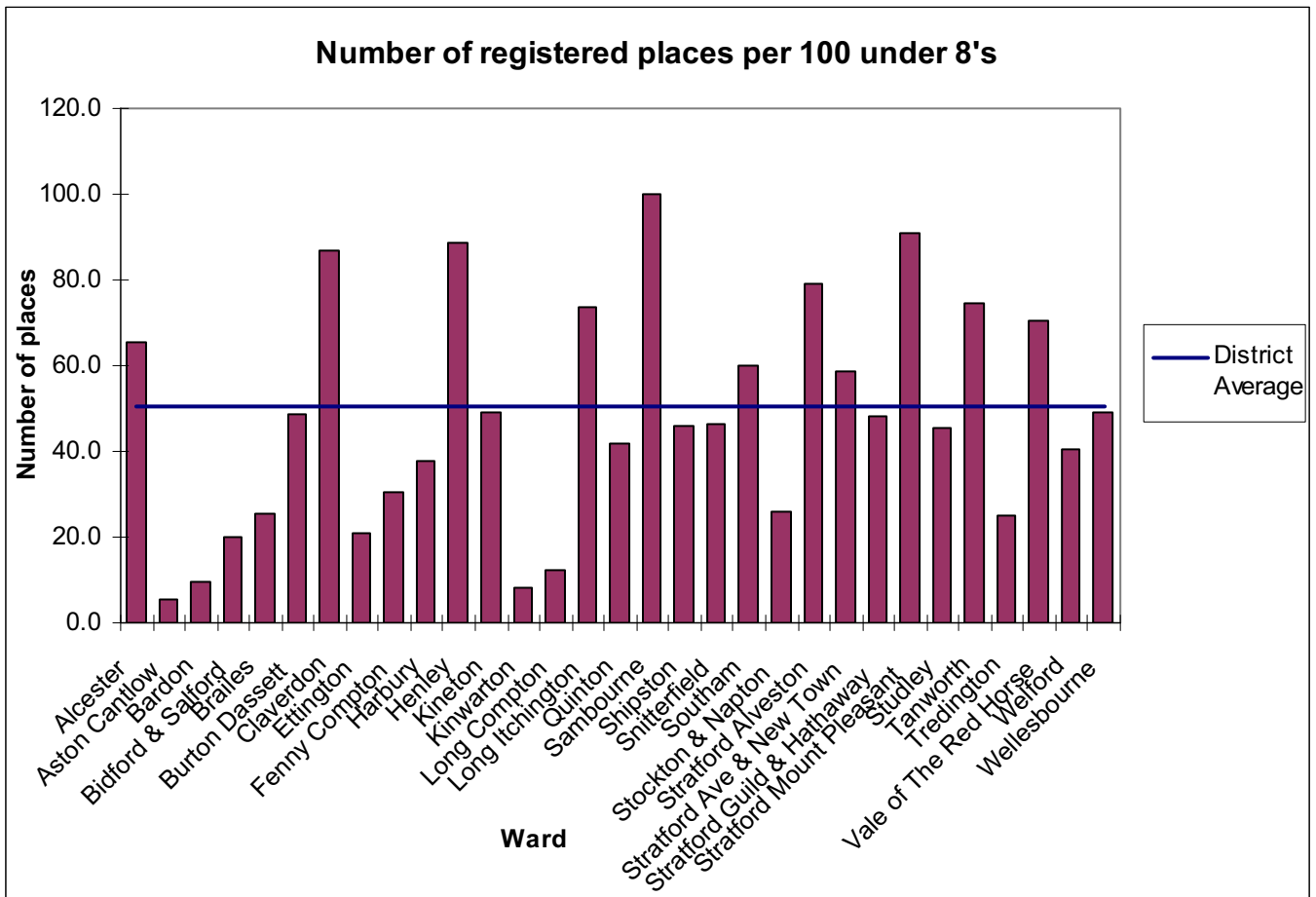
The lowest levels of provision are in Aston Cantlow, Bardon, Kinwarton and Long Compton – all of which have only one type of provision available. In Bardon the only type of care available is crèche day care. The limited provision in these wards may have implications for parental choice.

The following table shows the breakdown of registered places by type of care.

Ward	No. Under 8's	No. places per 100 under 8's	Childminder	Creche Day Care	Full Day Care	Out of School Day Care	Sessional Day Care	Grand Total
Alcester	444	65.3	56	10	171	53		290
Aston Cantlow	160	5.6	9					9
Bardon	181	9.4		17				17
Bidford & Salford	597	19.9	59		36		24	119
Brailes	154	25.3	19		20			39
Burton Dassett	236	48.7	15		36	48	16	115
Claverdon	200	87.0	11		86	45	32	174
Ettington	251	21.1	21		32			53
Fenny Compton	251	30.3	10		50	16		76
Harbury	394	37.6	22		35	65	26	148
Henley	317	88.6	19		132	46	84	281
Kinerton	381	49.1	48		83	32	24	187
Kinwarton	143	8.4	12					12
Long Compton	165	12.1			20			20
Long Itchington	207	73.4	4		116	32		152
Quinton	271	41.7	13			80	20	113
Sambourne	137	100.0	9		76	52		137
Shipston	436	46.1	42		87	72		201
Snitterfield	189	46.6	13		67		8	88
Southam	629	59.9	49		180	134	14	377
Stockton & Napton	261	26.1	4		16	24	24	68
Stratford Alveston	665	79.2	56		227	196	48	527
Stratford Ave & New Town	542	58.9	10	30	157	102	20	319
Stratford Guild & Hathaway	524	48.1	42		156	54		252
Stratford Mount Pleasant	333	91.0	52		171	80		303
Studley	498	45.6	38		59	130		227
Tanworth	261	74.7	4		111	68	12	195
Tredington	163	25.2	29				12	41
Vale of The Red Horse	173	70.5	6		56	60		122
Welford	149	40.3	4			32	24	60
Wellesbourne	564	49.3	94		36	90	58	278
Total Sum of Places	9876	50.6	770	57	2216	1511	446	5000

The number of children in each ward varies, and therefore the overall number of childcare places does not necessarily give the best picture of the level of provision. The least number of children under 8 is found in Sambourne ward, with an under 8 population of 137; the highest number of under 8's can be found in Stratford Alveston at 665.

The following graph shows the level of registered provision per 100 children under 8, including the average provision for the district.



Clearly there are significant differences between the levels of provision in different wards. Sambourne has the highest level of provision compared to the number of children, and has the same numbers of places as children under 8. By contrast Aston Cantlow has the lowest level of provision, with roughly one place for every 18 children.

Across the district there is roughly one place for every 2 children.

A map showing the location of childcare providers within the district is shown in Appendix B.

In addition to the registered provision there are 7 maintained nursery schools/classes.

Unregistered childcare

Across the district there are 9 known providers offering unregistered childcare; 3 holiday schemes/activities, 2 nursery units of independent schools and 4 out of school clubs.

All of the out of school clubs are for primary school aged children, and are based on a school site.

One holiday scheme is for primary school aged children, one for children aged 10-13 and one for all ages.

Opening hours

The times that settings open and close, and the length of the sessions, impacts on whether working parents are able to access childcare.

Most commonly settings open at 8am, although some providers are flexible. The earliest time childcare is available anywhere in the district is 6.00am. The majority of settings close between 5.30pm and 6pm, with the latest available childcare finishing at 7pm. Around 51% of providers are open for 10 hours or more per day.

Sessional care and crèches typically open later and close earlier than full day care and childminders, reflecting the shorter periods of care on offer. There are a number of holiday schemes in this district offering full day care.

9 providers are able to offer care during the weekends and 3 childminders are able to offer overnight care.

Flexibility is limited within all types of care except for childminders.

Children with additional needs

In Warwickshire children with additional needs are generally supported to attend mainstream childcare settings rather than accessing separate provision. Wherever possible providers are assisted to meet the needs of the individual child as part of their daily activity.

In the Stratford District 187 settings are willing to provide care for children with additional needs.

In addition 128 settings have confirmed wheelchair access. These are spread across 27 wards.

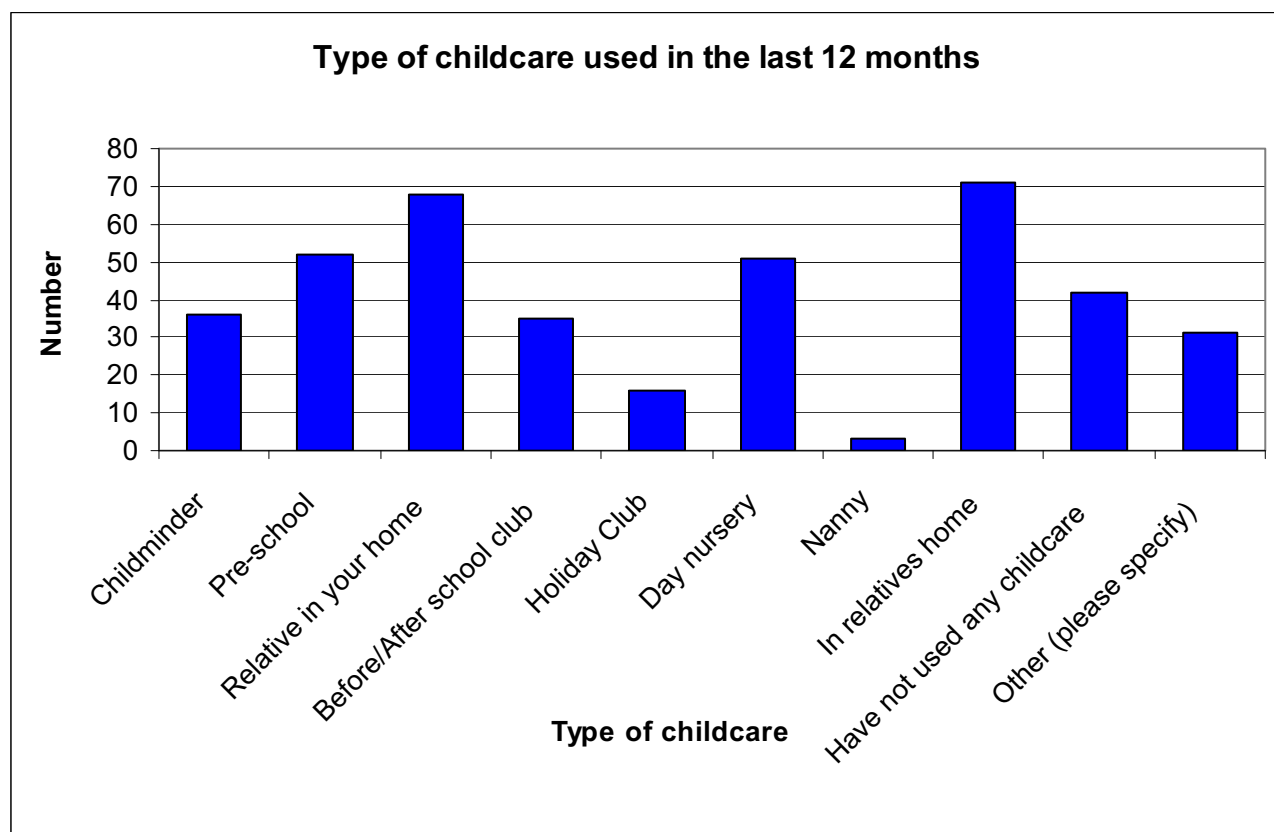
Where a child needs additional support within a setting, extra funding can be provided for this. During the second quarter of the year (July to Sept 07) the Integrated Disability Service funded 5 childcare placements in the Stratford District for children with additional needs.

Due to the support of children with additional needs within other settings, targeted schemes are more limited. There is one maintained assessment nursery in this district, which is attached to Welcombe Hills Special School.

Demand for childcare

19% of the parents survey¹ respondents stated that they had not used any childcare in the last 12 months. This is comparable to other districts.

Informal care in a relative's home, and informal care by a relative in the child's own home were the most commonly used types of childcare. The graph below shows the number of respondents who had used each type of care in the last year.



58% of respondents stated that they used childcare on a regular basis.

Take up of free nursery education places

1047 three year olds were receiving at least one nursery education grant session in January 2007 (Early Years Census, Jan 07)

Additionally, 211 children had places in a maintained nursery school/class. A further 21 children were listed in an assessment nursery. (Spring School Census, Jan 07)

This compares to 1240 3 year olds, giving a take up rate of around 103%. The take up rate implies that children from outside of Warwickshire are accessing nursery education grant sessions within the district.

¹ The Family Information Service Parents Survey launched in Jan 07 to collect parents views on access to childcare and other family support services. For further information please contact the Family Information Service.

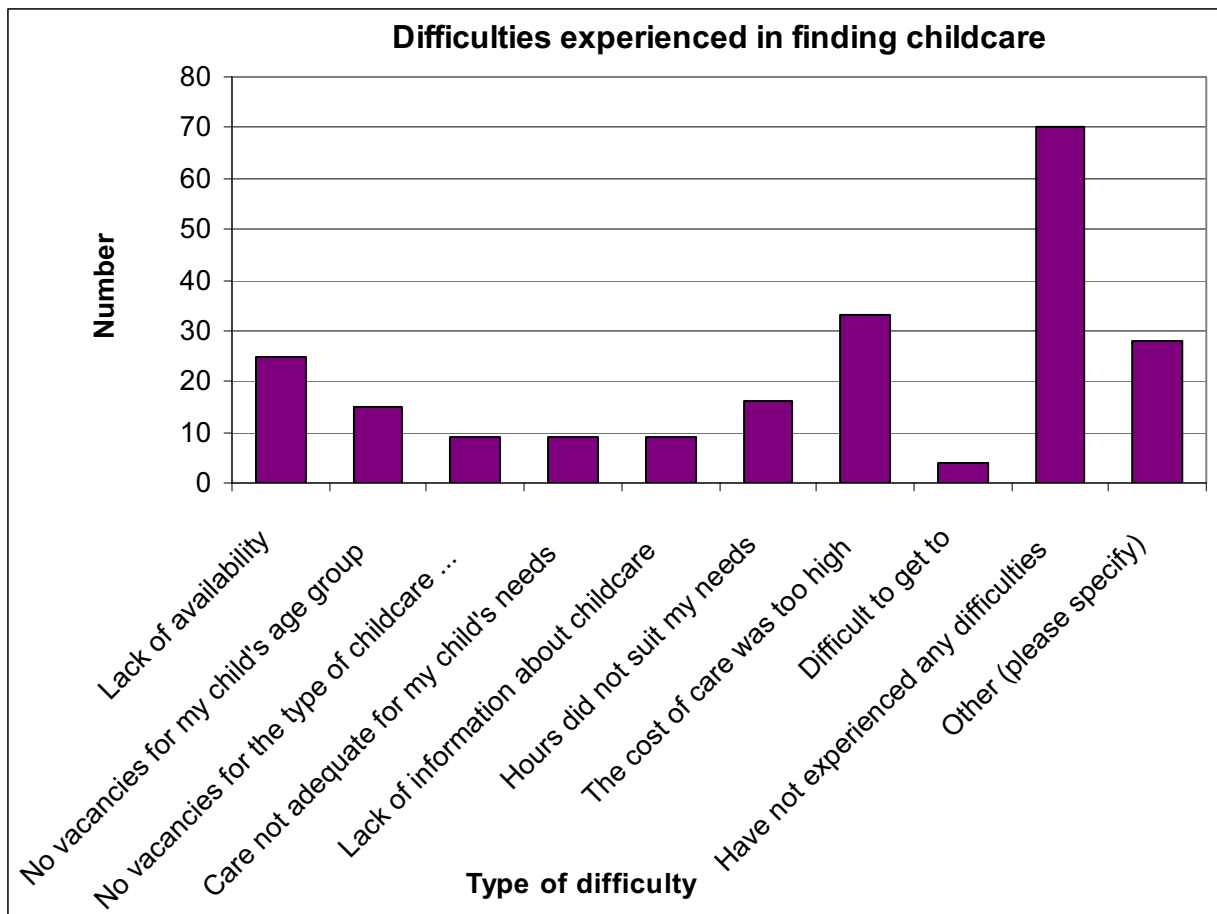
Only 465 four year olds were receiving nursery grant sessions compared to a population of 1215, however the majority of four year olds are already in school reception classes so this does not accurately reflect take up rates.

Among children entering reception classes in Autumn 2006 there were 3 reported instances of prohibitive cost restricting the use of pre-school facilities. These all attended a school in Stratford town. (Gap Survey, Feb 07).

Difficulties experienced finding childcare

32% of respondents to the parents survey have not experienced any difficulties in finding childcare. A further 34% have either not tried to find childcare or did not respond to the question.

The following graph shows the responses given to the survey regarding difficulties faced in the last 12 months.



The most commonly cited difficulty faced by parents in finding childcare is cost, which 15% of respondents to the parents survey stated had been a factor in the last year.

6% of respondents said they were unable to access information on looking for childcare; however only 4% gave this as a reason for having difficulties in the last year. This is comparable to other districts.

A breakdown of responses given on the use and access to childcare can be found in Appendix C.

Future demand

The number of live births in this district has been quite unsettled over the last few years, and it is not clear at present if the number of births is likely to increase or decrease. Projections suggest that a slight increase in the number of young children will be seen over the next few years.

Projected new housing is likely to increase demand for childcare only within the Stratford town area. Other parts of the district are not anticipated to have significant additional children due to new housing.

Affordability of childcare

Families with children can claim tax credits in addition to child benefit to help with the costs of raising a family. Child tax credit can be claimed by the majority of working families, and is included in benefit payments for non-working families. All families with an income below £50,000 are entitled to at least the family element, worth £545 a year.

Working tax credit can only be claimed by individuals working more than 16 hours a week, or couples working a combined total of 30 hours per week. It is directed at low income workers (generally under £15,000), to make working a more viable option.

Working tax credit includes an element specifically related to childcare, with eligible parents able to claim up to 80% of the cost of using registered childcare.

The maximum amount that can be claimed is £140 per week for families with one child (80% of £175), and £240 per week for families with two or more children (80% of £300). This is in addition to any other entitlement to working tax credit.

Working Tax Credit and Child Tax Credit

1920 families are claiming both child tax credit and working tax credit. Where both tax credits are claimed, families are receiving an additional £121.29 per week on average (£525.58 per month).

550 families are claiming the childcare element of working tax credit. Around two thirds of these are lone parents. On average the childcare element provides an additional £46.90 per week. This compares to an average weekly cost of a Southam day nursery at £158.30, or a childminder at £149.50. A breakdown of costs in key towns in the Stratford district can be found in Appendix D.

Childcare vouchers

Another option offered by some employers is childcare vouchers. Childcare vouchers are free from national insurance contributions, and the first £55 per week is also free from tax.

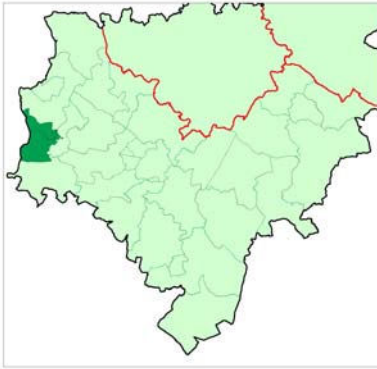
Childcare vouchers affect eligibility for tax credits, and therefore these are not the best option for all parents. In general terms a family will be better off claiming childcare vouchers in the following circumstances:

- If their childcare costs exceed £175 per week for one child, or £300 per week for two or more children
- If they are receiving the family element of child tax credit or less (£10.48 per week, or £20.96 per week if they have a baby under 1), and are claiming childcare costs.



Ward Profiles

Alcester



Super Output Area	IMD score	Warwickshire Rank*
Alcester South, Arrow & Weethley	5.76	285
Abbey, Grammar & Kings Coughton	5.13	298
Alcester North & Conway	19.39	86
Alcester East & Island	15.6	123

*1=most deprived, 333=least deprived

(OPDM, 2004)

Profile:

158 children aged 0-2
 96 children aged 3-4
 190 children aged 5-7
 236 children aged 8-10
 341 children aged 11-14
 275 children aged 15-17
 (Warks PCT, July 07)

There are 720 families claiming child benefit, and of these 565 are claiming child tax credit.

105 families are claiming out of work benefits, affecting 180 children.

295 children are known to be in lone parent families, around 44% of which are in households claiming out of work benefits.

(HMRC, Aug 05)¹

2.9% of statutory school age pupils that live in this ward and attend Warwickshire maintained schools are from BME communities². Of these, the largest minority ethnic group is Any Other Mixed Background.

Childcare Provision

	Childminder	Creche Day Care	Full Day Care	Out of School Day Care	Sessional Day Care	Grand Total
Providers	12	1	4	2		19
Places	56	10	171	53		290
Vacancies	16		26	10		52
% Vacant	29%	0%	15%	19%		18%

Number of places per 100 under 8's = 65.3

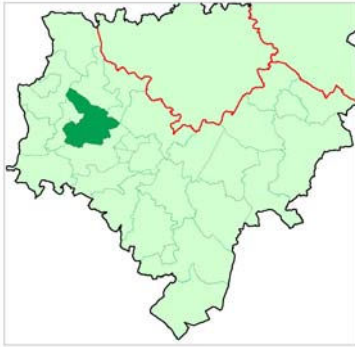
3 settings are currently registered to provide nursery education grant sessions.

Additionally there is an unregistered holiday activity for children aged 10 to 13.

¹ All figures from HMRC are rounded to the nearest 5 at super out area level

² BME includes all ethnic groups except for White British, White Irish, Information Not Yet Obtained and Refused. Based on Spring School Census Jan 07

Aston Cantlow



Super Output Area	IMD score	Warwickshire Rank*
Aston Cantlow	10.54	196

*1=most deprived, 333=least deprived

(OPDM, 2004)

Profile:

67 children aged 0-2
 32 children aged 3-4
 61 children aged 5-7
 62 children aged 8-10
 90 children aged 11-14
 58 children aged 15-17
 (Warks PCT, July 07)

There are 200 families claiming child benefit, and of these 105 are claiming child tax credit.

25 families are claiming out of work benefits, affecting 45 children.

50 children are known to be in lone parent families, around 60% of which are in households claiming out of work benefits.
 (HMRC, Aug 05)¹

3.2% of statutory school age pupils that live in this ward and attend Warwickshire maintained schools are from BME communities². Of these, the largest minority ethnic group is Any Other White Background.

Childcare Provision

	Childminder	Creche Day Care	Full Day Care	Out of School Day Care	Sessional Day Care	Grand Total
Providers	2					2
Places	9					9
Vacancies	2					2
% Vacant	22%					22%

Number of places per 100 under 8's = 5.6

0 settings are currently registered to provide nursery education grant sessions.

¹ All figures from HMRC are rounded to the nearest 5 at super out area level

² BME includes all ethnic groups except for White British, White Irish, Information Not Yet Obtained and Refused. Based on Spring School Census Jan 07

Bardon



Super Output Area	IMD score	Warwickshire Rank*
Bardon	10.38	197

*1=most deprived, 333=least deprived (OPDM, 2004)

Profile:
 54 children aged 0-2
 51 children aged 3-4
 76 children aged 5-7
 69 children aged 8-10
 113 children aged 11-14
 79 children aged 15-17
 (Warks PCT, July 07)

There are 215 families claiming child benefit, and of these 120 are claiming child tax credit.

25 families are claiming out of work benefits, affecting 45 children.

50 children are known to be in lone parent families, around 40% of which are in households claiming out of work benefits.
 (HMRC, Aug 05)¹

6.6% of statutory school age pupils that live in this ward and attend Warwickshire maintained schools are from BME communities². Of these, the largest minority ethnic group is Any Other White Background.

Childcare Provision

	Childminder	Creche Day Care	Full Day Care	Out of School Day Care	Sessional Day Care	Grand Total
Providers		1				1
Places		17				17
Vacancies						
% Vacant		0%				0%

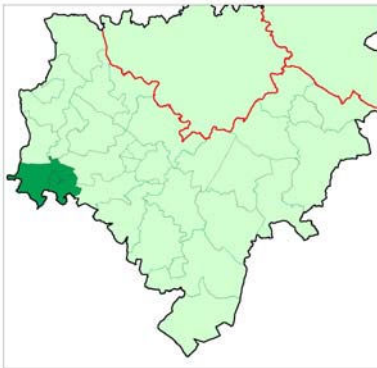
Number of places per 100 under 8's = 9.4

0 settings are currently registered to provide nursery education grant sessions.

¹ All figures from HMRC are rounded to the nearest 5 at super out area level

² BME includes all ethnic groups except for White British, White Irish, Information Not Yet Obtained and Refused. Based on Spring School Census Jan 07

Bidford and Salford



Super Output Area	IMD score	Warwickshire Rank*
Dunnington and Salford Priors	13.98	138
Bidford East, Waterloo & Broom	17.38	105
Bidford West and Wixford	5.88	280
Bidford South, Marlcliff and Barton	4.28	312

*1=most deprived, 333=least deprived

(OPDM, 2004)

Profile:

211 children aged 0-2
 165 children aged 3-4
 221 children aged 5-7
 265 children aged 8-10
 359 children aged 11-14
 254 children aged 15-17
 (Warks PCT, July 07)

There are 860 families claiming child benefit, and of these 610 are claiming child tax credit.

95 families are claiming out of work benefits, affecting 190 children.

275 children are known to be in lone parent families, around 47% of which are in households claiming out of work benefits.
 (HMRC, Aug 05)¹

4.4% of statutory school age pupils that live in this ward and attend Warwickshire maintained schools are from BME communities². Of these, the largest minority ethnic group is Any Other White Background.

Childcare Provision

	Childminder	Creche Day Care	Full Day Care	Out of School Day Care	Sessional Day Care	Grand Total
Providers	12		2		1	15
Places	59		36		24	119
Vacancies	9		2			11
% Vacant	15%		6%		0%	9%

Number of places per 100 under 8's = 19.9

2 settings are currently registered to provide nursery education grant sessions.

¹ All figures from HMRC are rounded to the nearest 5 at super out area level

² BME includes all ethnic groups except for White British, White Irish, Information Not Yet Obtained and Refused. Based on Spring School Census Jan 07

Brailes



Super Output Area	IMD score	Warwickshire Rank*
Brailes	8.67	234

*1=most deprived, 333=least deprived (OPDM, 2004)

Profile:
 51 children aged 0-2
 36 children aged 3-4
 67 children aged 5-7
 73 children aged 8-10
 101 children aged 11-14
 65 children aged 15-17
 (Warks PCT, July 07)

There are 225 families claiming child benefit, and of these 125 are claiming child tax credit.

20 families are claiming out of work benefits, affecting 40 children.

20 children are known to be in lone parent families, around half of which are in households claiming out of work benefits.
 (HMRC, Aug 05)¹

3.2% of statutory school age pupils that live in this ward and attend Warwickshire maintained schools are from BME communities². Of these, the largest minority ethnic groups are Any Other Mixed Background and White and Asian.

Childcare Provision

	Childminder	Creche Day Care	Full Day Care	Out of School Day Care	Sessional Day Care	Grand Total
Providers	4		1			5
Places	19		20			39
Vacancies	2		3			5
% Vacant	11%		15%			13%

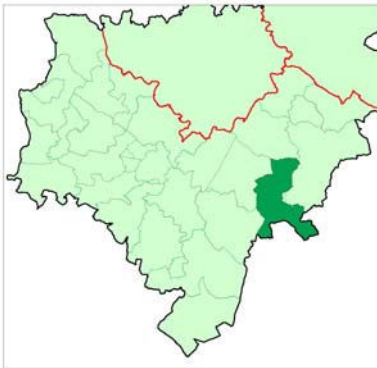
Number of places per 100 under 8's = 25.3

1 setting is currently registered to provide nursery education grant sessions.

¹ All figures from HMRC are rounded to the nearest 5 at super out area level

² BME includes all ethnic groups except for White British, White Irish, Information Not Yet Obtained and Refused. Based on Spring School Census Jan 07

Burton Dassett



Super Output Area	IMD score	Warwickshire Rank*
Burton Dassett	12.11	166

*1=most deprived, 333=least deprived (OPDM, 2004)

Profile:
 100 children aged 0-2
 52 children aged 3-4
 84 children aged 5-7
 87 children aged 8-10
 123 children aged 11-14
 55 children aged 15-17
 (Warks PCT, July 07)

There are 260 families claiming child benefit, and of these 155 are claiming child tax credit.

15 families are claiming out of work benefits, affecting 30 children.

60 children are known to be in lone parent families, around a third of which are in households claiming out of work benefits.
 (HMRC, Aug 05)¹

2.8% of statutory school age pupils that live in this ward and attend Warwickshire maintained schools are from BME communities². Of these, the largest minority ethnic group is Any Other White Background.

Childcare Provision

	Childminder	Creche Day Care	Full Day Care	Out of School Day Care	Sessional Day Care	Grand Total
Providers	3		1	2	1	7
Places	15		36	48	16	115
Vacancies	3		9		12	24
% Vacant	20%		25%	0%	75%	21%

Number of places per 100 under 8's = 48.7

2 settings are currently registered to provide nursery education grant sessions.

¹ All figures from HMRC are rounded to the nearest 5 at super out area level

² BME includes all ethnic groups except for White British, White Irish, Information Not Yet Obtained and Refused. Based on Spring School Census Jan 07

Claverdon



Super Output Area	IMD score	Warwickshire Rank*
Claverdon	6.98	261

*1=most deprived, 333=least deprived (OPDM, 2004)

Profile:
 65 children aged 0-2
 56 children aged 3-4
 79 children aged 5-7
 103 children aged 8-10
 110 children aged 11-14
 89 children aged 15-17
 (Warks PCT, July 07)

There are 265 families claiming child benefit, and of these 100 are claiming child tax credit.

5 families are claiming out of work benefits, affecting 15 children.

35 children are known to be in lone parent families, around 29% of which are in households claiming out of work benefits.
 (HMRC, Aug 05)¹

6.1% of statutory school age pupils that live in this ward and attend Warwickshire maintained schools are from BME communities². Of these, the largest minority ethnic group is White and Asian.

Childcare Provision

	Childminder	Creche Day Care	Full Day Care	Out of School Day Care	Sessional Day Care	Grand Total
Providers	2		2	1	1	6
Places	11		86	45	32	174
Vacancies					0	0
% Vacant	0%		0%	0%	0%	0%

Number of places per 100 under 8's = 87.0

2 settings are currently registered to provide nursery education grant sessions.

Additionally there is an unregistered breakfast club for children aged 4 to 11.

¹ All figures from HMRC are rounded to the nearest 5 at super out area level

² BME includes all ethnic groups except for White British, White Irish, Information Not Yet Obtained and Refused. Based on Spring School Census Jan 07

Ettington



Super Output Area	IMD score	Warwickshire Rank*
Ettington	8.8	231

*1=most deprived, 333=least deprived

(OPDM, 2004)

Profile:

73 children aged 0-2
 68 children aged 3-4
 110 children aged 5-7
 97 children aged 8-10
 126 children aged 11-14
 81 children aged 15-17
 (Warks PCT, July 07)

There are 325 families claiming child benefit, and of these 170 are claiming child tax credit.

25 families are claiming out of work benefits, affecting 45 children.

65 children are known to be in lone parent families, around 31% of which are in households claiming out of work benefits.
 (HMRC, Aug 05)¹

4.8% of statutory school age pupils that live in this ward and attend Warwickshire maintained schools are from BME communities². Of these, the largest minority ethnic groups are Any Other White Background and White and Asian.

Childcare Provision

	Childminder	Creche Day Care	Full Day Care	Out of School Day Care	Sessional Day Care	Grand Total
Providers	4		1			5
Places	21		32			53
Vacancies	2		10			12
% Vacant	10%		31%			23%

Number of places per 100 under 8's = 21.1

1 setting is currently registered to provide nursery education grant sessions.

¹ All figures from HMRC are rounded to the nearest 5 at super out area level

² BME includes all ethnic groups except for White British, White Irish, Information Not Yet Obtained and Refused. Based on Spring School Census Jan 07

Fenny Compton



Super Output Area	IMD score	Warwickshire Rank*
Ladbroke & Priors	11.23	181
Fenny Compton, Farnborough & Avon Dassett	8.2	244

*1=most deprived, 333=least deprived

(OPDM, 2004)

Profile:

87 children aged 0-2
 58 children aged 3-4
 106 children aged 5-7
 128 children aged 8-10
 119 children aged 11-14
 87 children aged 15-17
 (Warks PCT, July 07)

There are 300 families claiming child benefit, and of these 150 are claiming child tax credit.

25 families are claiming out of work benefits, affecting 40 children.

75 children are known to be in lone parent families, around 47% of which are in households claiming out of work benefits.
 (HMRC, Aug 05)¹

3.0% of statutory school age pupils that live in this ward and attend Warwickshire maintained schools are from BME communities². Of these, the largest minority ethnic group is Any Other White Background.

Childcare Provision

	Childminder	Creche Day Care	Full Day Care	Out of School Day Care	Sessional Day Care	Grand Total
Providers	2		2	1		5
Places	10		50	16		76
Vacancies	0		26	4		30
% Vacant	0%		52%	25%		39%

Number of places per 100 under 8's = 30.3

3 settings are currently registered to provide nursery education grant sessions.

Additionally there is an unregistered nursery unit of an independent school and a before and after school club for children aged 4 to 11.

¹ All figures from HMRC are rounded to the nearest 5 at super out area level

² BME includes all ethnic groups except for White British, White Irish, Information Not Yet Obtained and Refused. Based on Spring School Census Jan 07

Harbury



Super Output Area	IMD score	Warwickshire Rank*
Deppers Bridge, Chester & Kings	11.84	168
Bishops Itchington	5.46	289
Harbury	1.69	333

*1=most deprived, 333=least deprived

(OPDM, 2004)

Profile:

136 children aged 0-2
 101 children aged 3-4
 157 children aged 5-7
 202 children aged 8-10
 210 children aged 11-14
 184 children aged 15-17
 (Warks PCT, July 07)

There are 585 families claiming child benefit, and of these 365 are claiming child tax credit.

45 families are claiming out of work benefits, affecting 95 children.

130 children are known to be in lone parent families, around 42% of which are in households claiming out of work benefits.

(HMRC, Aug 05)¹

2.1% of statutory school age pupils that live in this ward and attend Warwickshire maintained schools are from BME communities². There are no large minority ethnic groups in this ward.

Childcare Provision

	Childminder	Creche Day Care	Full Day Care	Out of School Day Care	Sessional Day Care	Grand Total
Providers	5		2	3	1	11
Places	22		35	65	26	148
Vacancies	2		5	21		28
% Vacant	9%		14%	32%	0%	19%

Number of places per 100 under 8's = 37.6

3 settings are currently registered to provide nursery education grant sessions.

¹ All figures from HMRC are rounded to the nearest 5 at super out area level

² BME includes all ethnic groups except for White British, White Irish, Information Not Yet Obtained and Refused. Based on Spring School Census Jan 07

Henley



Super Output Area	IMD score	Warwickshire Rank*
Henley West	3.11	324
Henley East and Beaudesert	9.8	213
Wootton Wawen	10.19	201

*1=most deprived, 333=least deprived

(OPDM, 2004)

Profile:

115 children aged 0-2
 87 children aged 3-4
 115 children aged 5-7
 111 children aged 8-10
 173 children aged 11-14
 137 children aged 15-17
 (Warks PCT, July 07)

There are 415 families claiming child benefit, and of these 240 are claiming child tax credit.

40 families are claiming out of work benefits, affecting 60 children.

125 children are known to be in lone parent families, around 32% of which are in households claiming out of work benefits.

(HMRC, Aug 05)¹

3.3% of statutory school age pupils that live in this ward and attend Warwickshire maintained schools are from BME communities². Of these, the largest minority ethnic group is Any Other White Background.

Childcare Provision

	Childminder	Creche Day Care	Full Day Care	Out of School Day Care	Sessional Day Care	Grand Total
Providers	4		3	2	2	11
Places	19		132	46	84	281
Vacancies	5		13	16		34
% Vacant	26%		10%	35%	0%	12%

Number of places per 100 under 8's = 88.6

4 settings are currently registered to provide nursery education grant sessions.

¹ All figures from HMRC are rounded to the nearest 5 at super out area level

² BME includes all ethnic groups except for White British, White Irish, Information Not Yet Obtained and Refused. Based on Spring School Census Jan 07

Kineton



Super Output Area	IMD score	Warwickshire Rank*
Kineton, Chadshunt & Compton Verney	9.11	225
Kineton Castle, Lt Kineton & Combrook	11.8	169
Lighthorne & Lighthorne Heath	12.37	162

*1=most deprived, 333=least deprived

(OPDM, 2004)

Profile:

141 children aged 0-2
 100 children aged 3-4
 140 children aged 5-7
 156 children aged 8-10
 220 children aged 11-14
 172 children aged 15-17
 (Warks PCT, July 07)

There are 520 families claiming child benefit, and of these 325 are claiming child tax credit.

55 families are claiming out of work benefits, affecting 85 children.

140 children are known to be in lone parent families, around 39% of which are in households claiming out of work benefits.
 (HMRC, Aug 05)¹

4.1% of statutory school age pupils that live in this ward and attend Warwickshire maintained schools are from BME communities². Of these, the largest minority ethnic group is Indian.

Childcare Provision

	Childminder	Creche Day Care	Full Day Care	Out of School Day Care	Sessional Day Care	Grand Total
Providers	9		2	1	1	13
Places	48		83	32	24	187
Vacancies	2		8		8	18
% Vacant	4%		10%	0%	33%	10%

Number of places per 100 under 8's = 49.1

3 settings are currently registered to provide nursery education grant sessions.

There is 1 maintained nursery class.

¹ All figures from HMRC are rounded to the nearest 5 at super out area level

² BME includes all ethnic groups except for White British, White Irish, Information Not Yet Obtained and Refused. Based on Spring School Census Jan 07

Kinwarton



Super Output Area	IMD score	Warwickshire Rank*
Kinwarton	6.77	265

*1=most deprived, 333=least deprived (OPDM, 2004)

Profile:
 46 children aged 0-2
 37 children aged 3-4
 60 children aged 5-7
 64 children aged 8-10
 106 children aged 11-14
 85 children aged 15-17
 (Warks PCT, July 07)

There are 220 families claiming child benefit, and of these 140 are claiming child tax credit.

10 families are claiming out of work benefits, affecting 20 children.

50 children are known to be in lone parent families, around 20% of which are in households claiming out of work benefits.
 (HMRC, Aug 05)¹

3.6% of statutory school age pupils that live in this ward and attend Warwickshire maintained schools are from BME communities². Of these, the largest minority ethnic groups are White and Asian, and Any Other White Background.

Childcare Provision

	Childminder	Creche Day Care	Full Day Care	Out of School Day Care	Sessional Day Care	Grand Total
Providers	2					2
Places	12					12
Vacancies	5					5
% Vacant	42%					42%

Number of places per 100 under 8's = 8.4

0 settings are currently registered to provide nursery education grant sessions.

¹ All figures from HMRC are rounded to the nearest 5 at super out area level

² BME includes all ethnic groups except for White British, White Irish, Information Not Yet Obtained and Refused. Based on Spring School Census Jan 07

Long Compton



Super Output Area	IMD score	Warwickshire Rank*
Long Compton	13.76	142

*1=most deprived, 333=least deprived

(OPDM, 2004)

Profile:

69 children aged 0-2
 40 children aged 3-4
 56 children aged 5-7
 60 children aged 8-10
 85 children aged 11-14
 60 children aged 15-17
 (Warks PCT, July 07)

There are 215 families claiming child benefit, and of these 105 are claiming child tax credit.

15 families are claiming out of work benefits, affecting 25 children.

40 children are known to be in lone parent families, around 38% of which are in households claiming out of work benefits.
 (HMRC, Aug 05)¹

4.2% of statutory school age pupils that live in this ward and attend Warwickshire maintained schools are from BME communities². Of these, the largest minority ethnic groups are Any Other White Background, White and Asian, and Any Other Mixed Background.

Childcare Provision

	Childminder	Creche Day Care	Full Day Care	Out of School Day Care	Sessional Day Care	Grand Total
Providers			1			1
Places			20			20
Vacancies			4			4
% Vacant			20%			20%

Number of places per 100 under 8's = 12.1

1 setting is currently registered to provide nursery education grant sessions.

There is 1 maintained nursery class.

Additionally there is an unregistered after school club for children aged 5 to 11.

¹ All figures from HMRC are rounded to the nearest 5 at super out area level

² BME includes all ethnic groups except for White British, White Irish, Information Not Yet Obtained and Refused. Based on Spring School Census Jan 07

Long Itchington



Super Output Area	IMD score	Warwickshire Rank*
Long Itchington West & Ufton	7.57	253
Long Itchington East	9.02	226

*1=most deprived, 333=least deprived

(OPDM, 2004)

Profile:

80 children aged 0-2
 54 children aged 3-4
 73 children aged 5-7
 91 children aged 8-10
 130 children aged 11-14
 98 children aged 15-17
 (Warks PCT, July 07)

There are 260 families claiming child benefit, and of these 150 are claiming child tax credit.

20 families are claiming out of work benefits, affecting 40 children.

75 children are known to be in lone parent families, around 40% of which are in households claiming out of work benefits.
 (HMRC, Aug 05)¹

2.7% of statutory school age pupils that live in this ward and attend Warwickshire maintained schools are from BME communities². Of these, the largest minority ethnic group is Any Other White Background.

Childcare Provision

	Childminder	Creche Day Care	Full Day Care	Out of School Day Care	Sessional Day Care	Grand Total
Providers	1		3	1		5
Places	4		116	32		152
Vacancies			21			21
% Vacant	0%		18%	0%		14%

Number of places per 100 under 8's = 73.4

2 settings are currently registered to provide nursery education grant sessions.

¹ All figures from HMRC are rounded to the nearest 5 at super out area level

² BME includes all ethnic groups except for White British, White Irish, Information Not Yet Obtained and Refused. Based on Spring School Census Jan 07

Quinton



Super Output Area	IMD score	Warwickshire Rank*
Quinton	11.02	185

*1=most deprived, 333=least deprived (OPDM, 2004)

Profile:
 115 children aged 0-2
 58 children aged 3-4
 98 children aged 5-7
 114 children aged 8-10
 140 children aged 11-14
 91 children aged 15-17
 (Warks PCT, July 07)

There are 335 families claiming child benefit, and of these 240 are claiming child tax credit.

35 families are claiming out of work benefits, affecting 65 children.

95 children are known to be in lone parent families, around 47% of which are in households claiming out of work benefits.
 (HMRC, Aug 05)¹

2.8% of statutory school age pupils that live in this ward and attend Warwickshire maintained schools are from BME communities². Of these, the largest minority ethnic group is White and Asian.

Childcare Provision

	Childminder	Creche Day Care	Full Day Care	Out of School Day Care	Sessional Day Care	Grand Total
Providers	3			2	1	6
Places	13			80	20	113
Vacancies	2			32	8	42
% Vacant	15%			40%	40%	37%

Number of places per 100 under 8's = 41.7

1 setting is currently registered to provide nursery education grant sessions.

There is 1 maintained nursery class.

¹ All figures from HMRC are rounded to the nearest 5 at super out area level

² BME includes all ethnic groups except for White British, White Irish, Information Not Yet Obtained and Refused. Based on Spring School Census Jan 07

Sambourne



Super Output Area	IMD score	Warwickshire Rank*
Sambourne	11.35	179

*1=most deprived, 333=least deprived

(OPDM, 2004)

Profile:

46 children aged 0-2
 29 children aged 3-4
 62 children aged 5-7
 80 children aged 8-10
 84 children aged 11-14
 66 children aged 15-17
 (Warks PCT, July 07)

There are 205 families claiming child benefit, and of these 120 are claiming child tax credit.

20 families are claiming out of work benefits, affecting 35 children.

65 children are known to be in lone parent families, around 38% of which are in households claiming out of work benefits.
 (HMRC, Aug 05)¹

4.6% of statutory school age pupils that live in this ward and attend Warwickshire maintained schools are from BME communities². Of these, the largest minority ethnic groups are White and Black Caribbean, and Any Other White Background.

Childcare Provision

	Childminder	Creche Day Care	Full Day Care	Out of School Day Care	Sessional Day Care	Grand Total
Providers	2		1	2		5
Places	9		76	52		137
Vacancies	1		15	8		24
% Vacant	11%		20%	15%		18%

Number of places per 100 under 8's = 100.0

1 setting is currently registered to provide nursery education grant sessions.

¹ All figures from HMRC are rounded to the nearest 5 at super out area level

² BME includes all ethnic groups except for White British, White Irish, Information Not Yet Obtained and Refused. Based on Spring School Census Jan 07

Shipston



Super Output Area	IMD score	Warwickshire Rank*
Shipston South & Furze Hill	2.87	326
Shipston North	8.46	237
Shipston West and Town Centre	9.59	215

*1=most deprived, 333=least deprived

(OPDM, 2004)

Profile:

173 children aged 0-2
 102 children aged 3-4
 161 children aged 5-7
 137 children aged 8-10
 222 children aged 11-14
 171 children aged 15-17
 (Warks PCT, July 07)

There are 555 families claiming child benefit, and of these 400 are claiming child tax credit.

75 families are claiming out of work benefits, affecting 130 children.

170 children are known to be in lone parent families, around 47% of which are in households claiming out of work benefits.

(HMRC, Aug 05)¹

5.2% of statutory school age pupils that live in this ward and attend Warwickshire maintained schools are from BME communities². Of these, the largest minority ethnic groups are Any Other Mixed Background and Any Other White Background.

Childcare Provision

	Childminder	Creche Day Care	Full Day Care	Out of School Day Care	Sessional Day Care	Grand Total
Providers	9		2	2		13
Places	42		87	72		201
Vacancies	3		19			22
% Vacant	7%		22%	0%		11%

Number of places per 100 under 8's = 46.1

3 settings are currently registered to provide nursery education grant sessions.

¹ All figures from HMRC are rounded to the nearest 5 at super out area level

² BME includes all ethnic groups except for White British, White Irish, Information Not Yet Obtained and Refused. Based on Spring School Census Jan 07

Snitterfield



Super Output Area	IMD score	Warwickshire Rank*
Snitterfield & Wolverton	5.92	279
Hampton Lucy & Fulbrook	9.15	223

*1=most deprived, 333=least deprived

(OPDM, 2004)

Profile:

60 children aged 0-2
 52 children aged 3-4
 77 children aged 5-7
 90 children aged 8-10
 116 children aged 11-14
 74 children aged 15-17
 (Warks PCT, July 07)

There are 275 families claiming child benefit, and of these 135 are claiming child tax credit.

15 families are claiming out of work benefits, affecting 20 children.

60 children are known to be in lone parent families, around 25% of which are in households claiming out of work benefits.
 (HMRC, Aug 05)¹

3.9% of statutory school age pupils that live in this ward and attend Warwickshire maintained schools are from BME communities². Of these, the largest minority ethnic groups are Any Other White Background and Any Other Mixed Background.

Childcare Provision

	Childminder	Creche Day Care	Full Day Care	Out of School Day Care	Sessional Day Care	Grand Total
Providers	3		2		1	6
Places	13		67		8	88
Vacancies	0		8			8
% Vacant	0%		12%		0%	9%

Number of places per 100 under 8's = 46.6

3 settings are currently registered to provide nursery education grant sessions.

Additionally there is an unregistered after school club for children aged 4 to 11.

¹ All figures from HMRC are rounded to the nearest 5 at super out area level

² BME includes all ethnic groups except for White British, White Irish, Information Not Yet Obtained and Refused. Based on Spring School Census Jan 07

Southam



Super Output Area	IMD score	Warwickshire Rank*
Southam East	4.55	308
Southam North	5.88	281
Southam West	12.45	160
Southam South & Town Centre	4.79	306

*1=most deprived, 333=least deprived

(OPDM, 2004)

Profile:

197 children aged 0-2
 178 children aged 3-4
 254 children aged 5-7
 260 children aged 8-10
 385 children aged 11-14
 272 children aged 15-17
 (Warks PCT, July 07)

There are 870 families claiming child benefit, and of these 655 are claiming child tax credit.

80 families are claiming out of work benefits, affecting 160 children.

300 children are known to be in lone parent families, around 40% of which are in households claiming out of work benefits.
 (HMRC, Aug 05)¹

4.4% of statutory school age pupils that live in this ward and attend Warwickshire maintained schools are from BME communities². Of these, the largest minority ethnic group is Any Other White Background.

Childcare Provision

	Childminder	Creche Day Care	Full Day Care	Out of School Day Care	Sessional Day Care	Grand Total
Providers	10		4	6	1	21
Places	49		180	134	14	377
Vacancies	8		66		17	91
% Vacant	16%		37%	0%	121%	24%

Number of places per 100 under 8's = ...=59.9

5 settings are currently registered to provide nursery education grant sessions.

There is 1 maintained nursery class.

Additionally there is an unregistered holiday activity for children aged 4 to 11, and a leisure centre with a holiday activity programme for children of all ages.

¹ All figures from HMRC are rounded to the nearest 5 at super out area level

² BME includes all ethnic groups except for White British, White Irish, Information Not Yet Obtained and Refused. Based on Spring School Census Jan 07

Stockton and Napton



Super Output Area	IMD score	Warwickshire Rank*
Stockton	5.93	278
Napton on the Hill	8.28	243

*1=most deprived, 333=least deprived

(OPDM, 2004)

Profile:

101 children aged 0-2
 64 children aged 3-4
 96 children aged 5-7
 107 children aged 8-10
 161 children aged 11-14
 100 children aged 15-17
 (Warks PCT, July 07)

There are 330 families claiming child benefit, and of these 215 are claiming child tax credit.

25 families are claiming out of work benefits, affecting 35 children.

80 children are known to be in lone parent families, around 31% of which are in households claiming out of work benefits.
 (HMRC, Aug 05)¹

2.5% of statutory school age pupils that live in this ward and attend Warwickshire maintained schools are from BME communities². Of these, the largest minority ethnic group is Any Other White Background.

Childcare Provision

	Childminder	Creche Day Care	Full Day Care	Out of School Day Care	Sessional Day Care	Grand Total
Providers	1		1	1	1	4
Places	4		16	24	24	68
Vacancies	2		7		13	22
% Vacant	50%		44%	0%	54%	32%

Number of places per 100 under 8's = 26.1

2 settings are currently registered to provide nursery education grant sessions.

¹ All figures from HMRC are rounded to the nearest 5 at super out area level

² BME includes all ethnic groups except for White British, White Irish, Information Not Yet Obtained and Refused. Based on Spring School Census Jan 07

Stratford Alveston



Super Output Area	IMD score	Warwickshire Rank*
Bridgetown	5.67	287
Stratford South East & Alveston Hill	3.98	317
Tiddington & Alveston	8.17	245

*1=most deprived, 333=least deprived

(OPDM, 2004)

Profile:

257 children aged 0-2
 175 children aged 3-4
 233 children aged 5-7
 247 children aged 8-10
 321 children aged 11-14
 231 children aged 15-17
 (Warks PCT, July 07)

There are 660 families claiming child benefit, and of these 335 are claiming child tax credit.

40 families are claiming out of work benefits, affecting 70 children.

155 children are known to be in lone parent families, around 19% of which are in households claiming out of work benefits.

(HMRC, Aug 05)¹

10.2% of statutory school age pupils that live in this ward and attend Warwickshire maintained schools are from BME communities². Of these, the largest minority ethnic groups are Any Other White Background and Indian.

Childcare Provision

	Childminder	Creche Day Care	Full Day Care	Out of School Day Care	Sessional Day Care	Grand Total
Providers	13		3	5	2	23
Places	56		227	196	48	527
Vacancies	13		12		5	30
% Vacant	23%		5%	0%	10%	6%

Number of places per 100 under 8's = 79.2

6 settings are currently registered to provide nursery education grant sessions.

Additionally there is an unregistered nursery unit of an independent school.

¹ All figures from HMRC are rounded to the nearest 5 at super out area level

² BME includes all ethnic groups except for White British, White Irish, Information Not Yet Obtained and Refused. Based on Spring School Census Jan 07

Stratford Avenue and New Town



Super Output Area	IMD score	Warwickshire Rank*
Clopton & Welcombe Hills	2.0	332
Town Centre North	10.81	192
The Avenue	9.87	211
Maybird	20.36	77

*1=most deprived, 333=least deprived

(OPDM, 2004)

Profile:

188 children aged 0-2
 148 children aged 3-4
 206 children aged 5-7
 206 children aged 8-10
 276 children aged 11-14
 233 children aged 15-17
 (Warks PCT, July 07)

There are 655 families claiming child benefit, and of these 470 are claiming child tax credit.

95 families are claiming out of work benefits, affecting 175 children.

245 children are known to be in lone parent families, around 45% of which are in households claiming out of work benefits.

(HMRC, Aug 05)¹

10.3% of statutory school age pupils that live in this ward and attend Warwickshire maintained schools are from BME communities². Of these, the largest minority ethnic group is Any Other White Background.

Childcare Provision

	Childminder	Creche Day Care	Full Day Care	Out of School Day Care	Sessional Day Care	Grand Total
Providers	3	1	4	4	1	13
Places	10	30	157	102	20	319
Vacancies	0	10	5	10	2	27
% Vacant	0%	33%	3%	10%	10%	8%

Number of places per 100 under 8's = 58.9

6 settings are currently registered to provide nursery education grant sessions.

There is 1 maintained assessment nursery.

¹ All figures from HMRC are rounded to the nearest 5 at super out area level

² BME includes all ethnic groups except for White British, White Irish, Information Not Yet Obtained and Refused. Based on Spring School Census Jan 07

Stratford Guild and Hathaway



Super Output Area	IMD score	Warwickshire Rank*
Shottery South & Racecourse	2.71	328
Shottery North & Racecourse	8.31	242
Old Town & Town Centre South	11.01	187
Old Town	5.78	284

*1=most deprived, 333=least deprived

(OPDM, 2004)

Profile:

223 children aged 0-2
 123 children aged 3-4
 178 children aged 5-7
 172 children aged 8-10
 257 children aged 11-14
 233 children aged 15-17
 (Warks PCT, July 07)

There are 660 families claiming child benefit, and of these 405 are claiming child tax credit.

55 families are claiming out of work benefits, affecting 100 children.

210 children are known to be in lone parent families, around a third of which are in households claiming out of work benefits.

(HMRC, Aug 05)¹

9.7% of statutory school age pupils that live in this ward and attend Warwickshire maintained schools are from BME communities². Of these, the largest minority ethnic groups are Any Other White Background, White and Asian and Any Other Mixed Background.

Childcare Provision

	Childminder	Creche Day Care	Full Day Care	Out of School Day Care	Sessional Day Care	Grand Total
Providers	8		4	3		15
Places	42		156	54		252
Vacancies	0		30	20		50
% Vacant	0%		19%	37%		20%

Number of places per 100 under 8's = 48.1

4 settings are currently registered to provide nursery education grant sessions.

¹ All figures from HMRC are rounded to the nearest 5 at super out area level

² BME includes all ethnic groups except for White British, White Irish, Information Not Yet Obtained and Refused. Based on Spring School Census Jan 07

Stratford Mount Pleasant



Super Output Area	IMD score	Warwickshire Rank*
Bishopton	6.84	264
Stratford Mount Pleasant West	6.11	275
Stratford Mount Pleasant East	15.76	119

*1=most deprived, 333=least deprived

(OPDM, 2004)

Profile:

122 children aged 0-2
 87 children aged 3-4
 124 children aged 5-7
 148 children aged 8-10
 211 children aged 11-14
 175 children aged 15-17
 (Warks PCT, July 07)

There are 500 families claiming child benefit, and of these 380 are claiming child tax credit.

65 families are claiming out of work benefits, affecting 115 children.

185 children are known to be in lone parent families, around 51% of which are in households claiming out of work benefits.

(HMRC, Aug 05)¹

6.9% of statutory school age pupils that live in this ward and attend Warwickshire maintained schools are from BME communities². Of these, the largest minority ethnic group is Any Other White Background.

Childcare Provision

	Childminder	Creche Day Care	Full Day Care	Out of School Day Care	Sessional Day Care	Grand Total
Providers	12		3	2		17
Places	52		171	80		303
Vacancies	4		0			4
% Vacant	8%		0%	0%		1%

Number of places per 100 under 8's = 91.0

2 settings are currently registered to provide nursery education grant sessions.

¹ All figures from HMRC are rounded to the nearest 5 at super out area level

² BME includes all ethnic groups except for White British, White Irish, Information Not Yet Obtained and Refused. Based on Spring School Census Jan 07

Studley



Super Output Area	IMD score	Warwickshire Rank*
Studley East & Priory	6.16	273
Studley North	12.51	156
Studley West & Common	8.71	233
Studley South	12.67	155

*1=most deprived, 333=least deprived

(OPDM, 2004)

Profile:

172 children aged 0-2
 110 children aged 3-4
 216 children aged 5-7
 231 children aged 8-10
 315 children aged 11-14
 224 children aged 15-17
 (Warks PCT, July 07)

There are 715 families claiming child benefit, and of these 575 are claiming child tax credit.

95 families are claiming out of work benefits, affecting 165 children.

280 children are known to be in lone parent families, around 43% of which are in households claiming out of work benefits.
 (HMRC, Aug 05)¹

7.1% of statutory school age pupils that live in this ward and attend Warwickshire maintained schools are from BME communities². Of these, the largest minority ethnic groups are Any Other White Background, and White and Black Caribbean.

Childcare Provision

	Childminder	Creche Day Care	Full Day Care	Out of School Day Care	Sessional Day Care	Grand Total
Providers	9		2	4		15
Places	38		59	130		227
Vacancies	2		11			13
% Vacant	5%		19%	0%		6%

Number of places per 100 under 8's = 45.6

1 setting is currently registered to provide nursery education grant sessions.

There is 1 maintained nursery class.

¹ All figures from HMRC are rounded to the nearest 5 at super out area level

² BME includes all ethnic groups except for White British, White Irish, Information Not Yet Obtained and Refused. Based on Spring School Census Jan 07

Tanworth



Super Output Area	IMD score	Warwickshire Rank*
Earlswood	9.0	227
Tanworth	11.99	167

*1=most deprived, 333=least deprived

(OPDM, 2004)

Profile:

97 children aged 0-2

53 children aged 3-4

111 children aged 5-7

135 children aged 8-10

207 children aged 11-14

149 children aged 15-17

(Warks PCT, July 07)

There are 415 families claiming child benefit, and of these 160 are claiming child tax credit.

15 families are claiming out of work benefits, affecting 35 children.

55 children are known to be in lone parent families, around 36% of which are in households claiming out of work benefits.

(HMRC, Aug 05)¹

3.9% of statutory school age pupils that live in this ward and attend Warwickshire maintained schools are from BME communities². Of these, the largest minority ethnic group is Any Other White Background.

Childcare Provision

	Childminder	Creche Day Care	Full Day Care	Out of School Day Care	Sessional Day Care	Grand Total
Providers	1		3	2	1	7
Places	4		111	68	12	195
Vacancies			16			16
% Vacant	0%		14%	0%	0%	8%

Number of places per 100 under 8's = 74.7

3 settings are currently registered to provide nursery education grant sessions.

¹ All figures from HMRC are rounded to the nearest 5 at super out area level

² BME includes all ethnic groups except for White British, White Irish, Information Not Yet Obtained and Refused. Based on Spring School Census Jan 07

Tredington



Super Output Area	IMD score	Warwickshire Rank*
Tredington & Blackwell	7.14	259
Newbold-on-Stour, Ilmington East & Whitchurch	8.81	230

*1=most deprived, 333=least deprived

(OPDM, 2004)

Profile:

58 children aged 0-2
 33 children aged 3-4
 72 children aged 5-7
 75 children aged 8-10
 117 children aged 11-14
 97 children aged 15-17
 (Warks PCT, July 07)

There are 275 families claiming child benefit, and of these 150 are claiming child tax credit.

15 families are claiming out of work benefits, affecting 30 children.

65 children are known to be in lone parent families, around 31% of which are in households claiming out of work benefits.

(HMRC, Aug 05)¹

1.5% of statutory school age pupils that live in this ward and attend Warwickshire maintained schools are from BME communities². There are no large minority ethnic groups in this ward.

Childcare Provision

	Childminder	Creche Day Care	Full Day Care	Out of School Day Care	Sessional Day Care	Grand Total
Providers	6				1	7
Places	29				12	41
Vacancies	1				4	5
% Vacant	3%				33%	12%

Number of places per 100 under 8's = 25.2

1 setting is currently registered to provide nursery education grant sessions.

¹ All figures from HMRC are rounded to the nearest 5 at super out area level

² BME includes all ethnic groups except for White British, White Irish, Information Not Yet Obtained and Refused. Based on Spring School Census Jan 07

Vale of the Red Horse



Super Output Area	IMD score	Warwickshire Rank*
Vale of the Red Horse	7.54	254

*1=most deprived, 333=least deprived (OPDM, 2004)

Profile:
 52 children aged 0-2
 38 children aged 3-4
 83 children aged 5-7
 85 children aged 8-10
 130 children aged 11-14
 105 children aged 15-17
 (Warks PCT, July 07)

There are 265 families claiming child benefit, and of these 135 are claiming child tax credit.

15 families are claiming out of work benefits, affecting 20 children.

55 children are known to be in lone parent families, around 27% of which are in households claiming out of work benefits.
 (HMRC, Aug 05)¹

5.2% of statutory school age pupils that live in this ward and attend Warwickshire maintained schools are from BME communities². Of these, the largest minority ethnic groups are Any Other White Background and White and Black Caribbean.

Childcare Provision

	Childminder	Creche Day Care	Full Day Care	Out of School Day Care	Sessional Day Care	Grand Total
Providers	1		2	2		5
Places	6		56	60		122
Vacancies			23			23
% Vacant	0%		41%	0%		19%

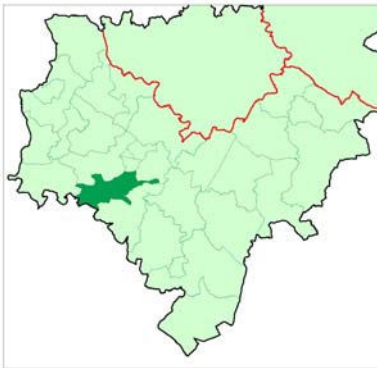
Number of places per 100 under 8's = 70.5

2 settings are currently registered to provide nursery education grant sessions.

¹ All figures from HMRC are rounded to the nearest 5 at super out area level

² BME includes all ethnic groups except for White British, White Irish, Information Not Yet Obtained and Refused. Based on Spring School Census Jan 07

Welford



Super Output Area	IMD score	Warwickshire Rank*
Welford	8.99	228

*1=most deprived, 333=least deprived (OPDM, 2004)

Profile:
 45 children aged 0-2
 36 children aged 3-4
 68 children aged 5-7
 91 children aged 8-10
 130 children aged 11-14
 91 children aged 15-17
 (Warks PCT, July 07)

There are 230 families claiming child benefit, and of these 105 are claiming child tax credit.

15 families are claiming out of work benefits, affecting 25 children.

35 children are known to be in lone parent families, around 43% of which are in households claiming out of work benefits.
 (HMRC, Aug 05)¹

3.3% of statutory school age pupils that live in this ward and attend Warwickshire maintained schools are from BME communities². Of these, the largest minority ethnic group is White and Black Caribbean.

Childcare Provision

	Childminder	Creche Day Care	Full Day Care	Out of School Day Care	Sessional Day Care	Grand Total
Providers	1			2	1	4
Places	4			32	24	60
Vacancies					0	0
% Vacant	0%			0%	0%	0%

Number of places per 100 under 8's = 40.3

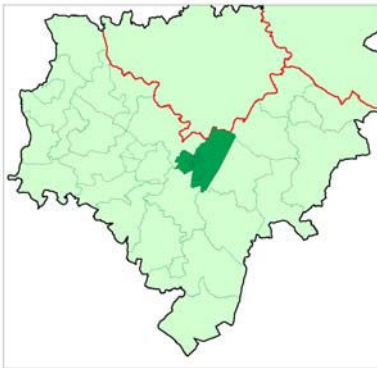
1 setting is currently registered to provide nursery education grant sessions.

There is 1 maintained nursery school.

¹ All figures from HMRC are rounded to the nearest 5 at super out area level

² BME includes all ethnic groups except for White British, White Irish, Information Not Yet Obtained and Refused. Based on Spring School Census Jan 07

Wellesbourne



Super Output Area	IMD score	Warwickshire Rank*
Wellesbourne West	11.71	170
Wellesbourne East, Walton & Airfield	4.62	307
Wellesbourne South	5.96	277
Moreton Morrell, Ashorne & Newbold Pacey	6.94	263
Wellesbourne North	8.43	238

*1=most deprived, 333=least deprived

(OPDM, 2004)

Profile:

186 children aged 0-2
 136 children aged 3-4
 242 children aged 5-7
 217 children aged 8-10
 298 children aged 11-14
 294 children aged 15-17
 (Warks PCT, July 07)

There are 790 families claiming child benefit, and of these 510 are claiming child tax credit.

70 families are claiming out of work benefits, affecting 115 children.

205 children are known to be in lone parent families, around 39% of which are in households claiming out of work benefits.
 (HMRC, Aug 05)¹

3.6% of statutory school age pupils that live in this ward and attend Warwickshire maintained schools are from BME communities². There are no large minority ethnic groups in this ward.

Childcare Provision

	Childminder	Creche Day Care	Full Day Care	Out of School Day Care	Sessional Day Care	Grand Total
Providers	20		1	2	2	25
Places	94		36	90	58	278
Vacancies	16			10	16	42
% Vacant	17%		0%	11%	28%	15%

Number of places per 100 under 8's = 49.3

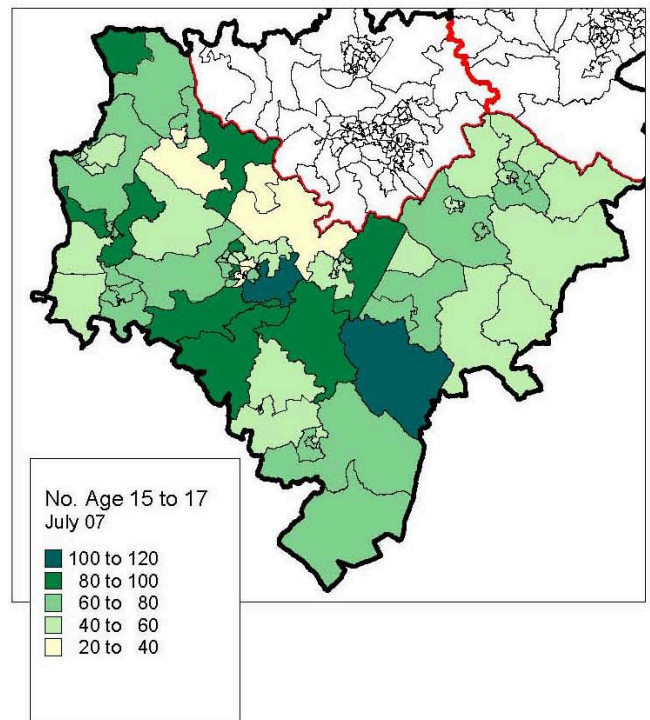
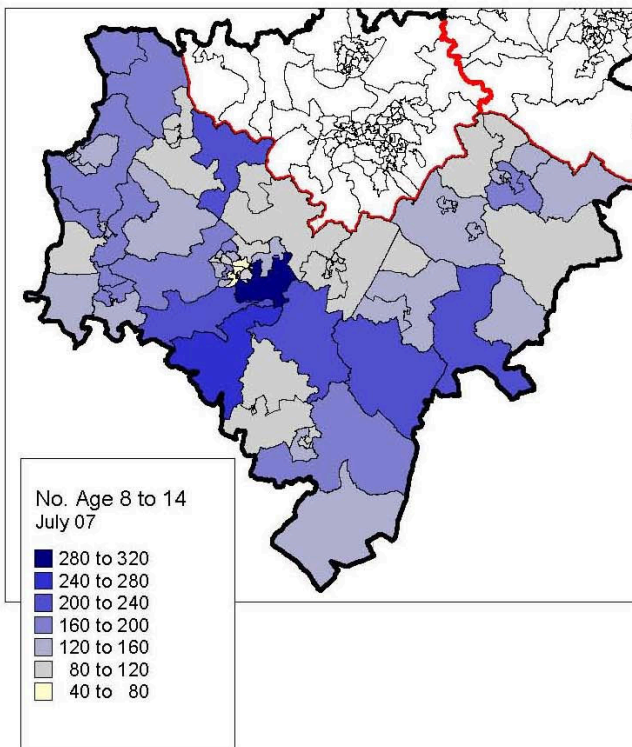
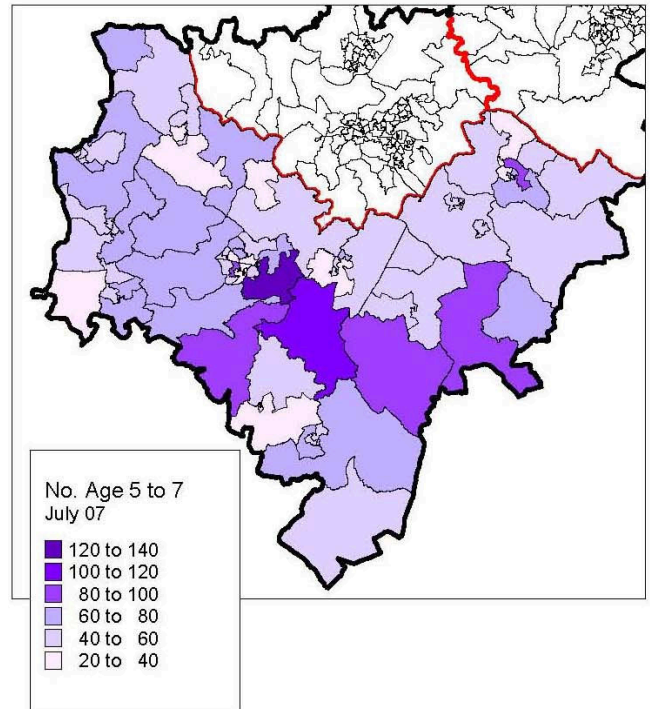
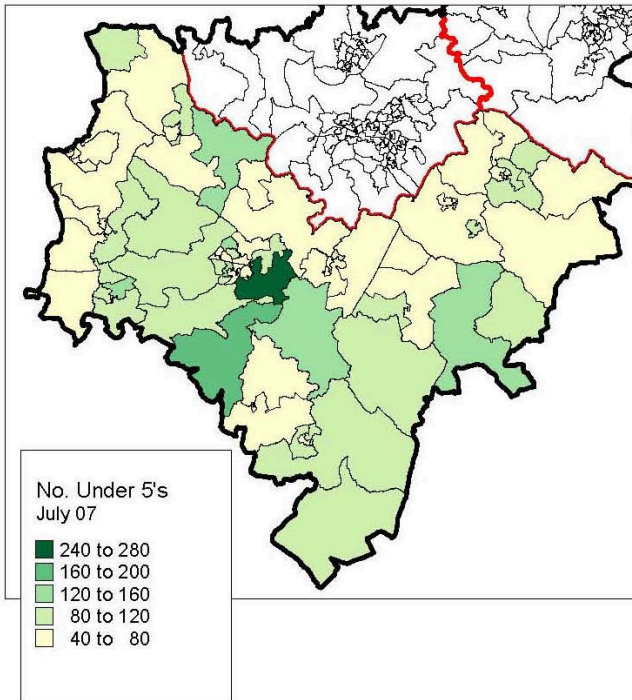
3 settings are currently registered to provide nursery education grant sessions.

There is 1 maintained nursery class.

¹ All figures from HMRC are rounded to the nearest 5 at super out area level

² BME includes all ethnic groups except for White British, White Irish, Information Not Yet Obtained and Refused. Based on Spring School Census Jan 07

Appendix A: Maps showing the distribution of children by age group

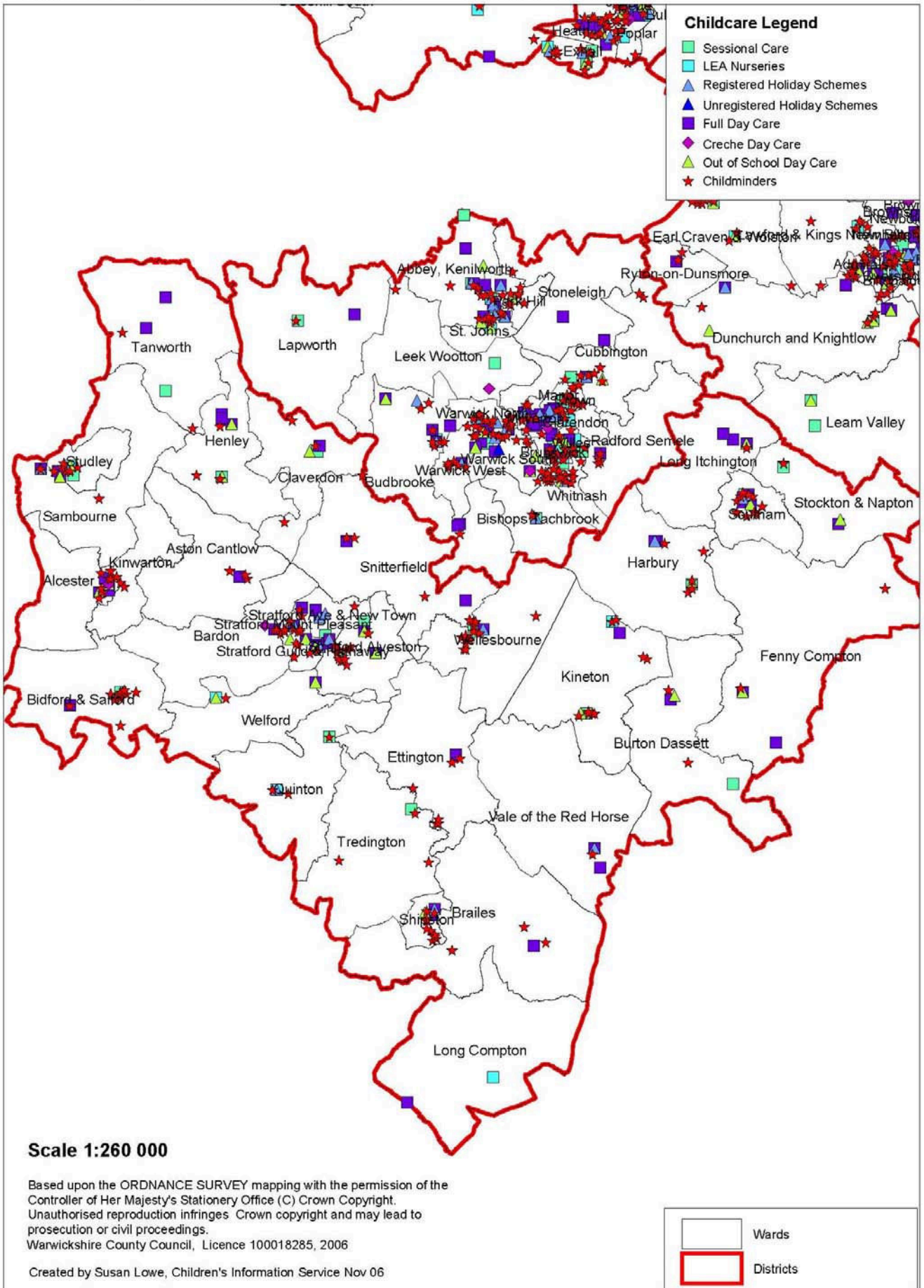


Based on Ordnance Survey mapping with the permission of the Controller of Her Majesty's Stationery Office © Crown Copyright. Unauthorised reproduction infringes Crown copyright and may lead to prosecution or civil proceedings. Warwickshire County Council, Licence 100018285, 2007

Appendix B: Location of childcare by type

Childcare by District November 2006

Stratford District



Appendix C: Parent's survey responses on use of and access to childcare

No. of respondents	How many children do you have in each age group?					Total
	0-2 years	3-4 years	5-7 years	8-14 years	15-17 years	
216	106	58	68	65	10	307

Are any of the children registered as disabled or statemented?

	Disabled		Statemented	
	3-4	5-7	8-14	15-17
Disabled 0-2	0	0	3	0
Statemented 0-2	3	0	3	2

Which category best describes their disability

	Communication and social interaction	Learning difficulties in all areas	Behaviour, emotional or social development	Sensory and/or physical	Other (please specify)
	6	8	5	4	3

Tick all the ways in which care has been provided for each child in the last 12 months

Parent age	Childminder	Pre-school	Relative in your home	Before/After school club	Holiday Club	Day nursery	Nanny	In relatives home	Have not used any childcare	Other (please specify)
17-19	36	52	68	35	16	51	3	71	42	31
	17%	24%	31%	16%	7%	24%	1%	33%	19%	14%

Tick all the reasons why you have used childcare in the last 12 months

Regular Use	Sick care	School holidays	Emergency care	Night or weekend care	Other (please specify)
125	16	27	18	27	29
58%	7%	13%	8%	13%	13%

In the last year have you experienced any difficulties in finding childcare? If yes, please tick all that apply

Lack of availability	No vacancies for my child's age group	No vacancies for the type of childcare I am looking for	Care not adequate for my child's needs	Lack of information about childcare	Hours did not suit my needs	The cost of care was too high	Difficult to get to	Have not experienced any difficulties	Other (please specify)
25	15	9	9	9	16	33	4	70	28
12%	7%	4%	4%	4%	7%	15%	2%	32%	13%

Appendix D: Average costs of childcare – Stratford District Aug 07

Stratford -upon-Avon									
Childminders									
Costs per hour			Costs per day			Costs per week			
Highest	Lowest	Average	Highest	Lowest	Average	Highest	Lowest	Average	
3.50	2.50	3.41	45.00	30.00	34.38	175.00	150.00	161.67	
Day Nurseries									
Costs per session			Costs per day			Costs per week			
Highest	Lowest	Average	Highest	Lowest	Average	Highest	Lowest	Average	
21.00	11.50	17.45	44.00	22.00	35.10	188.80	107.50	160.80	
Out of School Clubs									
Average costs for full use of before and after school care (per day)									9.65

Southam									
Childminders									
Costs per hour			Costs per day			Costs per week			
Highest	Lowest	Average	Highest	Lowest	Average	Highest	Lowest	Average	
4.50	2.50	3.22	35.00	30.00	31.08	157.50	140.00	149.50	
Day Nurseries									
Costs per session			Costs per day			Costs per week			
Highest	Lowest	Average	Highest	Lowest	Average	Highest	Lowest	Average	
23.50	5.65	18.28	37.50	30.00	33.40	175.00	142.00	158.30	
Out of School Clubs									
Average costs for full use of before and after school care (per day)									10.39

Page 172

Alcester									
Childminders									
Costs per hour (£)			Costs per day			Costs per week			
Highest	Lowest	Average	Highest	Lowest	Average	Highest	Lowest	Average	
4.00	1.50	3.23	40.00	12.00	26.93	200.00	60.00	151.09	
Day Nurseries									
Costs per session			Costs per day			Costs per week			
Highest	Lowest	Average	Highest	Lowest	Average	Highest	Lowest	Average	
9.40	8.40	8.90	29.00	28.00	28.50	N/A	N/A	N/A	
Out of School Clubs									
Average costs for full use of before and after school care (per day)									9.32

Wellesbourne									
Childminders									
Costs per hour			Costs per day			Costs per week			
Highest	Lowest	Average	Highest	Lowest	Average	Highest	Lowest	Average	
3.75	3.00	3.38	35.00	35.00	35.00	N/A	N/A	N/A	
Day Nurseries									
Costs per session			Costs per day			Costs per week			
Highest	Lowest	Average	Highest	Lowest	Average	Highest	Lowest	Average	
15.65	15.65	15.65	31.30	31.30	31.30	N/A	N/A	N/A	
Out of School Clubs									
Average costs for full use of before and after school care (per day)									9.65

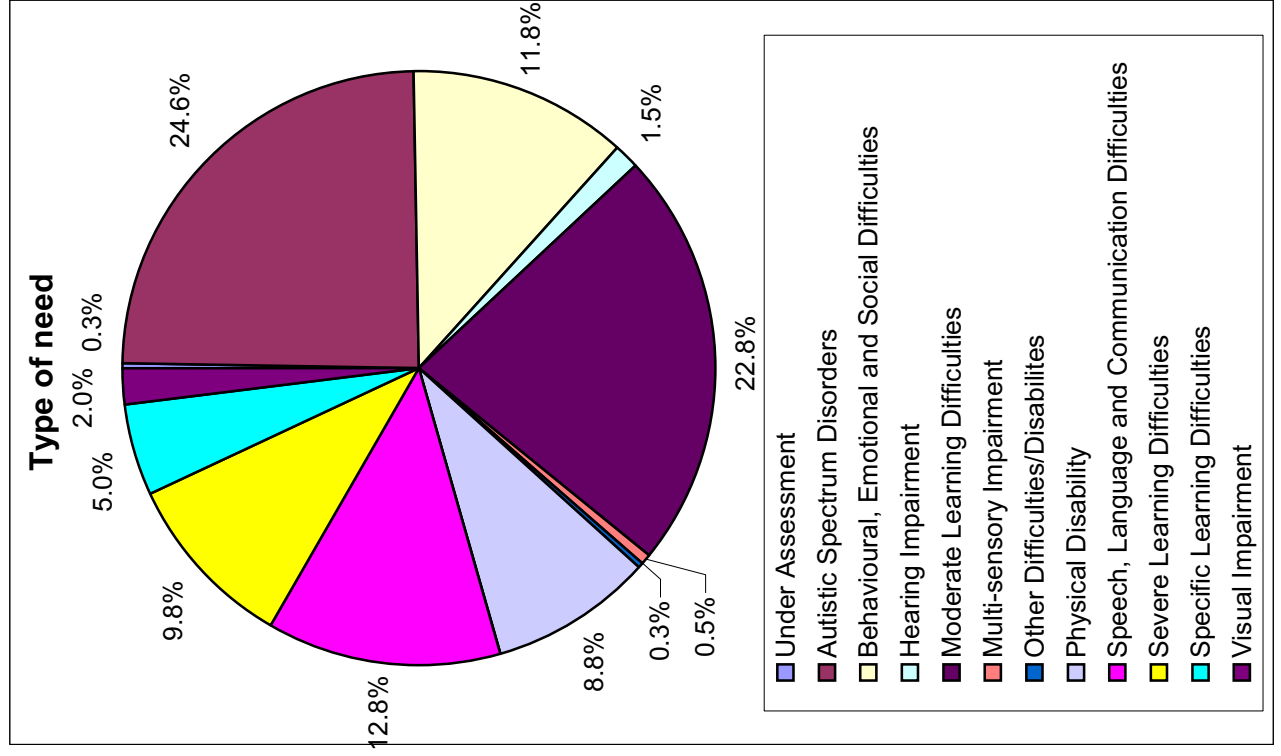
Appendix E: Breakdown of children with a statement of special educational needs by type of need

Description	Number	Percentage
Under Assessment	1	0.3%
Autistic Spectrum Disorders	98	24.6%
Behavioural, Emotional and Social Difficulties	47	11.8%
Hearing Impairment	6	1.5%
Moderate Learning Difficulties	91	22.8%
Multi-sensory Impairment	2	0.5%
Other Difficulties/Disabilities	1	0.3%
Physical Disability	35	8.8%
Profound and Multiple Learning Difficulties	0	0.0%
Speech, Language and Communication Difficulties	51	12.8%
Severe Learning Difficulties	39	9.8%
Specific Learning Difficulties	20	5.0%
Visual Impairment	8	2.0%
total	399	100%

Male	300	75%
Female	99	25%
	399	100%

Total aged 5-17*	18,236
% of population	2.2%

* Population figures from Warks PCT, July 07



Appendix F: Glossary of abbreviations

The following list details abbreviations either used in this document or commonly used by others in referring to the relevant topic:

ASRS - Assessment, Statementing and Review Service

BME communities – Black, Minority and Ethnic communities. In this document BME communities include Bangladeshi, Black African, Black Caribbean, Chinese, Gypsy/Roma, Indian, Pakistani, Traveller of Irish Heritage, White and Asian, White and Black African, White and Black Caribbean, Any Other Asian Background, Any Other Black Background, Any Other Mixed Background, Any Other White Background, and Any Other Ethnic Group

CTC – Child Tax Credit

FIS – Family Information Service (formerly Children’s Information Service)

HMRC – Her Majesty’s Revenue and Customs

IMD – Index of Multiple Deprivation. The IMD 2004 contains seven Domains of deprivation. These are: Income deprivation, Employment deprivation, Health deprivation and disability, Education, skills and training deprivation, Barriers to Housing and Services, Living environment deprivation and Crime

JCP – Job Centre Plus

NEG – Nursery Education Grant

ODPM – Office of the Deputy Prime Minister

Ofsted – Office for Standards in Education

SEN – Special Educational Needs

Warks PCT – Warwickshire Primary Care Trust

WTC – Working Tax Credit

If you find this document difficult to understand, we can provide it in another format, for example in Braille, in large print, on audiotape, in another language or by talking to you. Please contact us on 0845 0908044.